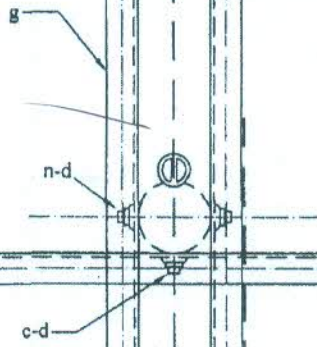


*(Kamrul Ahsan Mollah)*  
Asst. Secy. (Board), BREB.

*(Debasish Chakraborty)*  
PD, TAPP, BREB

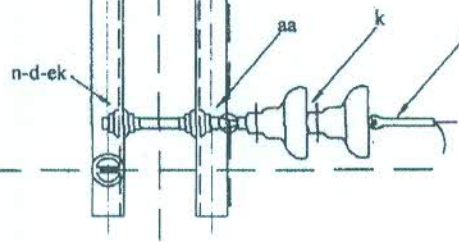


*(Md. Ahsanul Haque)*  
Consultant TAPP BREB

*(Md. Mozammel Haque)*  
Consultant TAPP BREB

*(Md. Abdul Khaleque)*  
Consultant TAPP BREB

*(Md. Duhidul Islam)*  
Consultant TAPP BREB



*(Md. Mozibur Rahman)*  
Consultant TAPP BREB

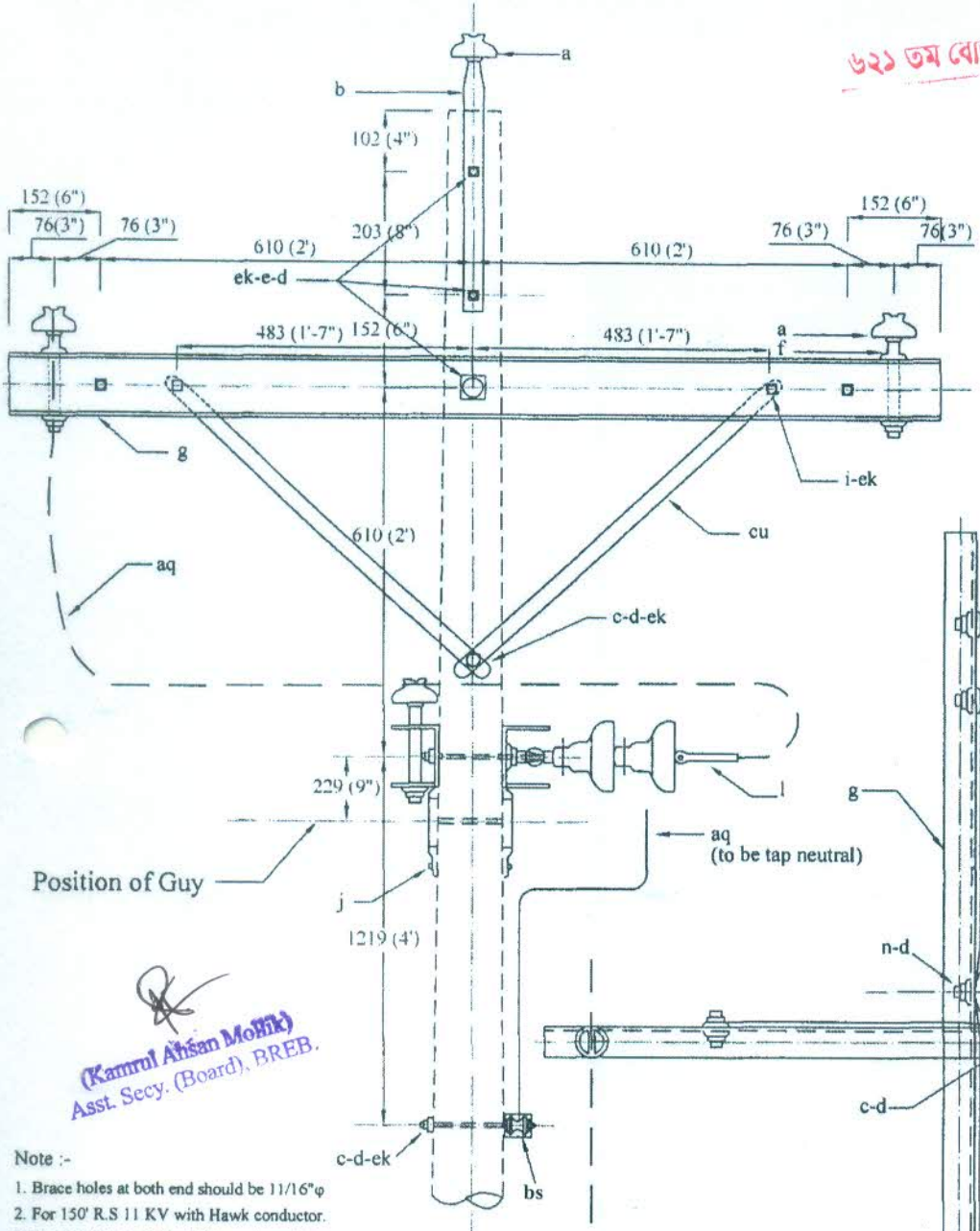
TOP VIEW

BANGLADESH RURAL ELECTRIFICATION BOARD

Unit Description: 6.35/ 11 KV. PRIMARY, 3-PHASE STEEL CROSSARM(X7) CONSTRUCTION SINGLE CIRCUIT 1-PHASE TAP

Date of Origin	Reviewed by	Approved by	Revision No.	Unit Designation
July 1979	BREB	BREB Board	6	C23A Sheet 2 of 2

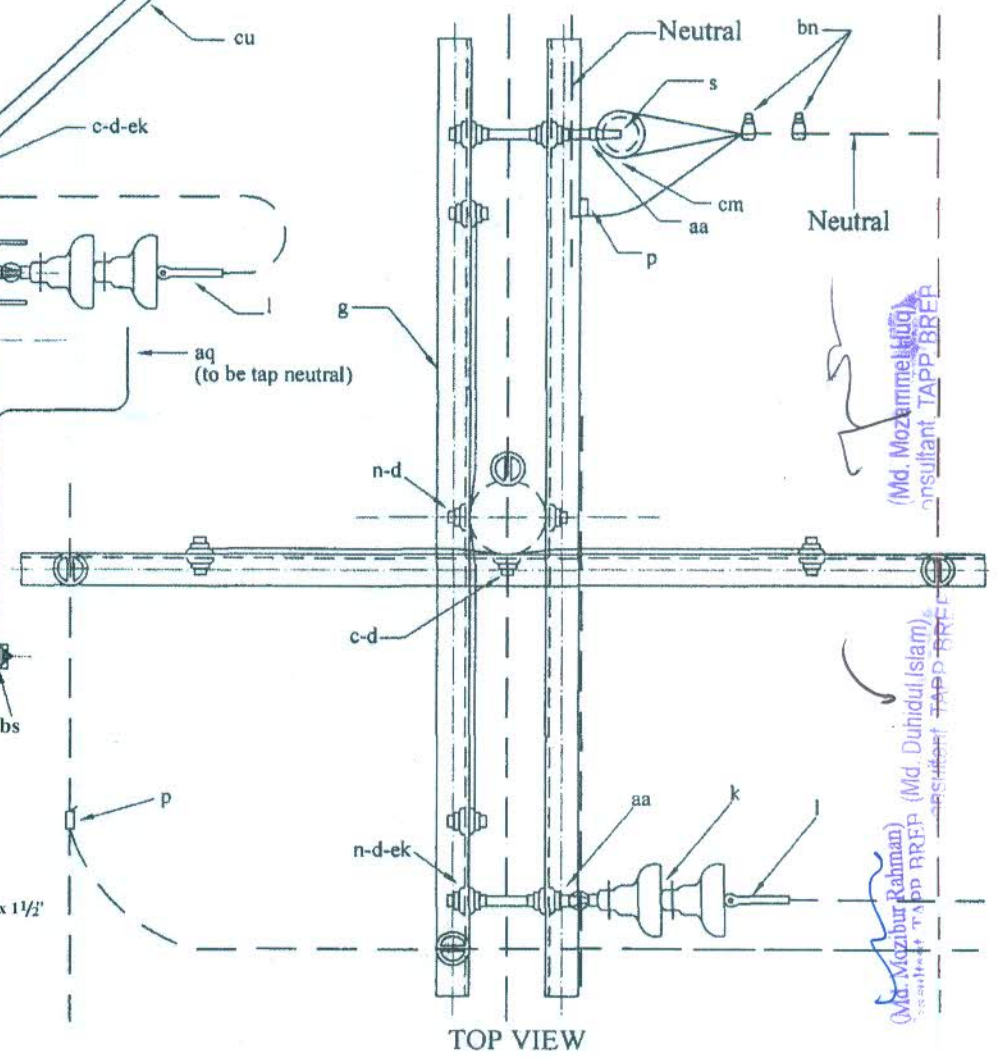




*(Md. Abdul Khaleque)*  
Consultant TAPP, BREB

*(Md. Ahsanul Haque)*  
Consultant TAPP, BREB

*(Debash Chakraborty)*  
D.O TAPP, BREB



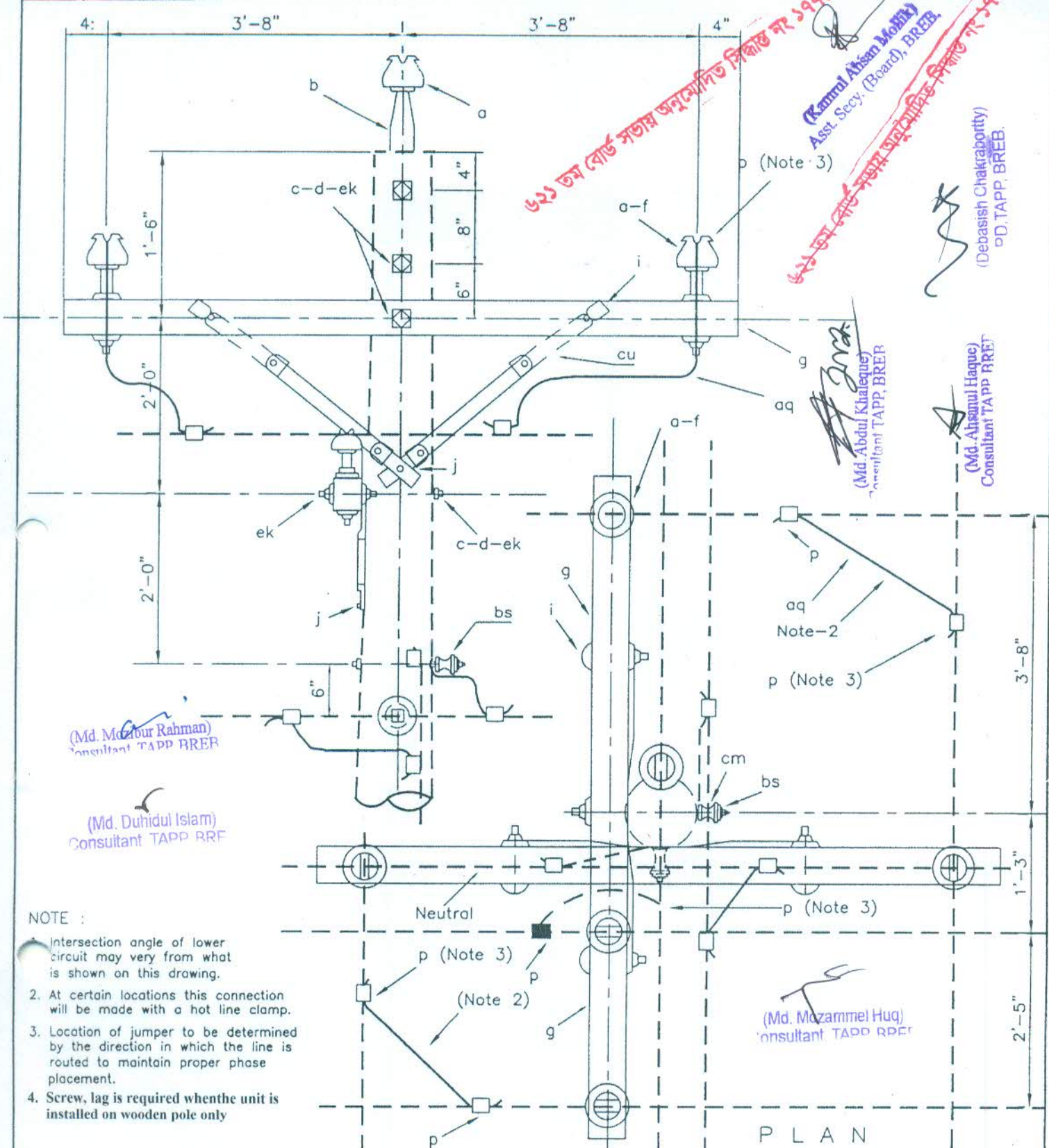
- Note :-
1. Brace holes at both end should be 11/16"φ
  2. For 150' R.S 11 KV with Hawk conductor.
  3. For 150' R.S 11 KV with Penguin conductor.
  4. Tap take-off angle between top and bottom circuit may vary from what is shown on this drawing.
  5. Refer to A7 drawing for deadend requirements.
  6. Location of jumpers will be determined by the phase to be tapped.
  7. At certain location this connection will Bolt Carriage/ Bolt, M/C, 1/2" x 1 1/2"
  8. See drawing M42-11 for deadend assembly details.
  9. Normally Bolts will be used to fix the hardware. If not possible use of G I Clamps (duly approved by BREB) shall be made.
  10. Screw lag is required when the unit is installed on wooden pole only.

ITEM	MAT. CODE	Qty.	MATERIAL	ITEM	Mat. Code	Qty.	MATERIAL
a	C1	04	Insulator, pin type	s	B73	01	Clevis, secondary, swinging
b	B2	01	Pin, pole top, 20"	aa	B53	02	Nut, eye, 5/8"
c	B 6/7/8	06	Bolt, machine, 5/8" x Required length	c	B3	06	Bolt, M/C, 1/2" x 1 1/2"
d	B 46/118	06	Washer, square, 2 1/4"	c	B4/ B4.1-4.3	03	Bolt, M/C, 1/2" x as req length
f	B1	03	Pin, crossarm, steel, 5/8" x 10-3/4"	bn	B85/86	02	Clamp, loop deadend
g	X6	03	Crossarm, steel channel 4" x 2" x 2" x 1/4" x 5'-0"	cm	C3/2	02	Spool, Insulator, 1-3/4" or 3" dia groove
j	B 40	06	Screw, lag (for wood pole)	cu	B41/B41.1/B44	06	Brace, Steel/Wood, 28" x 1/4"
k	C10	02	Insulator, suspension	ek	B50/ 138	22	Locknuts, 5/8" bolt size
l	B 81/132/133	01	Clamp, deadend	n	B26/27/28	03	Bolt double arming, 5/8" x required length
				bs	B33/34/35	01	Bolt, Single Upset, 5/8" x as req'd length

BANGLADESH RURAL ELECTRIFICATION BOARD				
Unit Description: 6.35/11 KV PRIMARY, 3-PHASE STEEL CROSSARM (X6) CONSTRUCTION- SINGLE DEADEND				
Date of Origin	Reviewed by	Approved by	Revision No.	Unit Designation
July 1979	BREB	BREB Board	6	C23B
Revision Date: July 1980. June 1981. August 1989. July 1995. August 2013. February 2020				



৬২১ ভা বোর্ড সভায় অনুমোদিত সিদ্ধান্ত নং ১৯৯০/০১  
 (Kamrul Ahsan Mobity)  
 Asst. Secy. (Board), BREB.  
 ৬২১ ভা বোর্ড সভায় অনুমোদিত সিদ্ধান্ত নং ১৯৯০/০১  
 (Debasish Chakraborty)  
 PD, TAPP, BREB.



(Md. Mazhar Rahman)  
 Consultant TAPP BREB

(Md. Duhidul Islam)  
 Consultant TAPP BREB

**NOTE :**

1. Intersection angle of lower circuit may vary from what is shown on this drawing.
2. At certain locations this connection will be made with a hot line clamp.
3. Location of jumper to be determined by the direction in which the line is routed to maintain proper phase placement.
4. Screw, lag is required when the unit is installed on wooden pole only

(Md. Mazammel Haq)  
 Consultant TAPP BREB

ITEM	MAT. CODE	NO	MATERIAL	ITEM	MAT. CODE	NO.	MATERIAL
a	C1	6	Insulator, pin type	i	B32	4	Bolt, carriage, 3/8"x4 1/2"
b	B2	1	Pin, pole top, 20"	i/c	B40/B4/4.1-4.3	2	Screw, lag, 1/2"x4" Bolt, m/c, 1/2"x 6"-12"
c	B/6/7/8	4	Bolt, machine, 5/8"xreq'd length	p	I5/I6		Connectors as required
d	B46/118	8	Washer, square, 2 1/4"	aq			Jumpers and leads as required
f	B1	5	Pin, crossarm, steel, 5/8"x10-3/4"	bs	B33/34/35	2	Bolt, single upset
g	X1	2	Crossarm, 3-1/2"x 4-1/2"x 8'-0"	cm	C3/2	2	Spool insulator, 1 3/4" or 3" dia groove
cu	B41/B41.1/B44	4	Brace, Steel/Wood, 28" x 1/4"	ek			Locknuts, as required

**BANGLADESH RURAL ELECTRIFICATION BOARD**

**Unit Description: 6.35/11 KV PRIMARY, 3-PHASE WOODEN CROSSARM CONSTRUCTION WITH 3-PHASE JUNCTION**

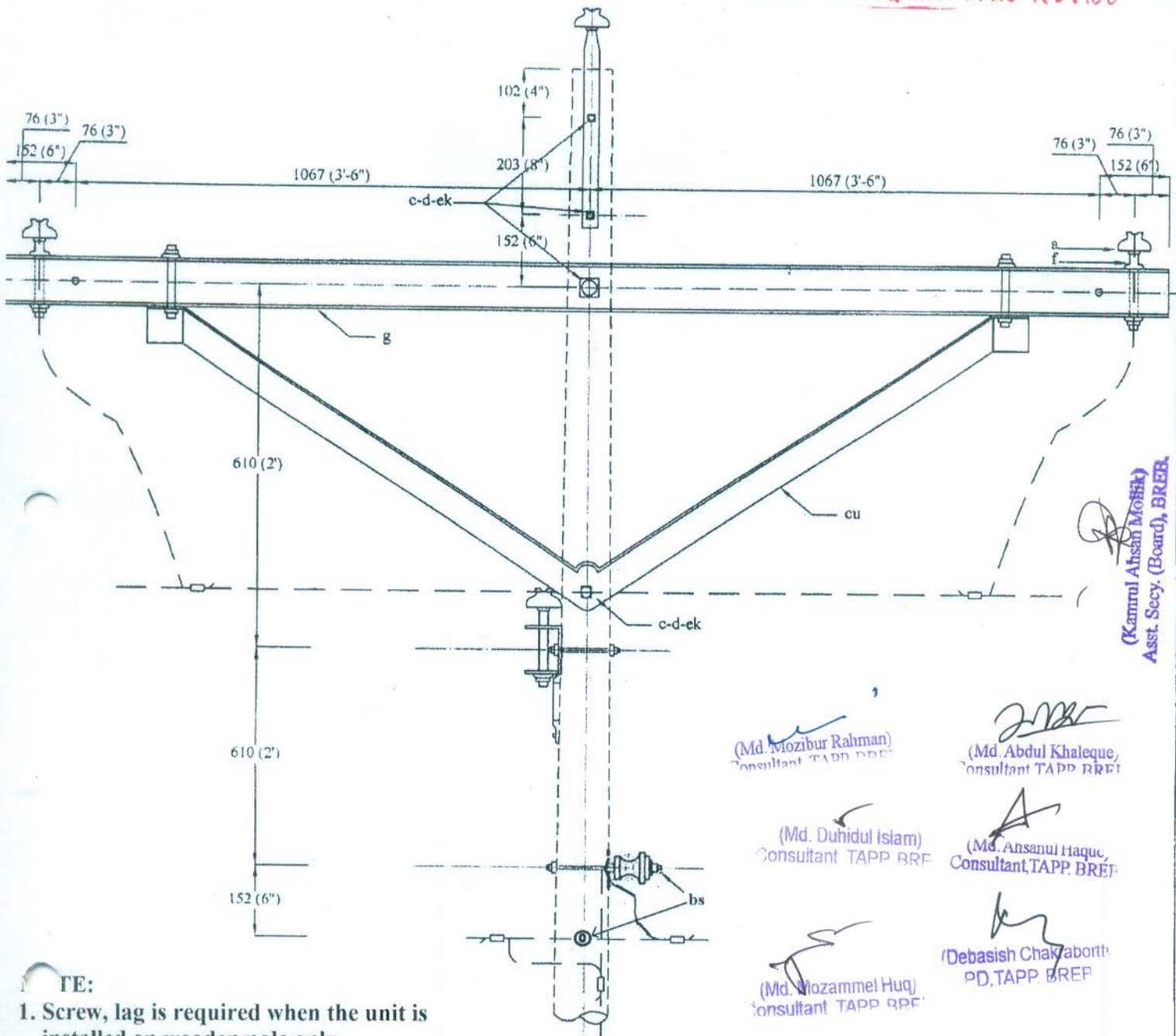
Date of Origin	Reviewed by	Approved by	Revision No.	Unit Designation
July 1979	BREB	BREB Board	6	

Revision Date: July 1980, June 1981, August 1989, July 1995, August 2013, February 2020



2438 (8')

৬২১ ভম বোর্ড সভায় অনুমোদিত সিদ্ধান্ত নং ১৭৭০০

(Kamrul Ahsan Mobin)  
Asst. Secy. (Board), BREB.(Md. Mozibur Rahman)  
Consultant TAPP BREB(Md. Abdul Khaleque)  
Consultant TAPP BREB(Md. Duhidul Islam)  
Consultant TAPP BREB(Md. Ansanul Haque)  
Consultant TAPP BREB(Md. Mozammel Haq)  
Consultant TAPP BREB(Debasish Chakraborty)  
PD, TAPP BREB

NOTE:

1. Screw, lag is required when the unit is installed on wooden pole only.

Item	Mat. Code	Qty.	MATERIAL	ITEM	Mat. Code	Qty.	MATERIAL
a	C1	06	Insulator, pin type	p	15/16	-	Connectors as required
b	B2	01	Pin, pole top, 20"	ag		-	Jumpers, and leads as required
c	B 6/7/8	04	Bolt, machine, 5/8" x Required length	cm	C 3/2	02	Spool, Insulator, 1-3/4" or 3" dia groove
d	B 46/118	08	Washer, square, 2 1/4"	ek	B 50	12	Locknuts as required 5/8" φ
f	B1	05	Pin, crossarm, steel, 5/8" x 10-3/4"	c	B4/4.1-4.3	02	Bolt, M/C, 1/2" x 6"-12"
g	X7	02	Crossarm, steel channel 4" x 2" x 2" x 1/4" x 8'-0"	cu	B42/42.1/45	02	Brace, steel /Wood 60" span
c	B3	04	Bolt, M/C, 1/2" x 1 1/2"	bs	B33/34/35	02	Bolt, Single Upset, 5/8" x as req'd length
j	B40	02	Screw, lag (for wood pole only)				

## BANGLADESH RURAL ELECTRIFICATION BOARD

Unit Description: 6.35/ 11 KV PRIMARY, 3-PHASE STEEL CROSSARM (X7) CONSTRUCTION WITH 3-PHASE JUNCTION

Date of Origin	Reviewed by	Approved by	Revision No.	Unit Designation
July 1979	BREB	BREB Board	6	C25A Sheet 1 of 2

Revision Date: July 1980, June 1981, August 1989, July 1995, August 2013, February 2020

