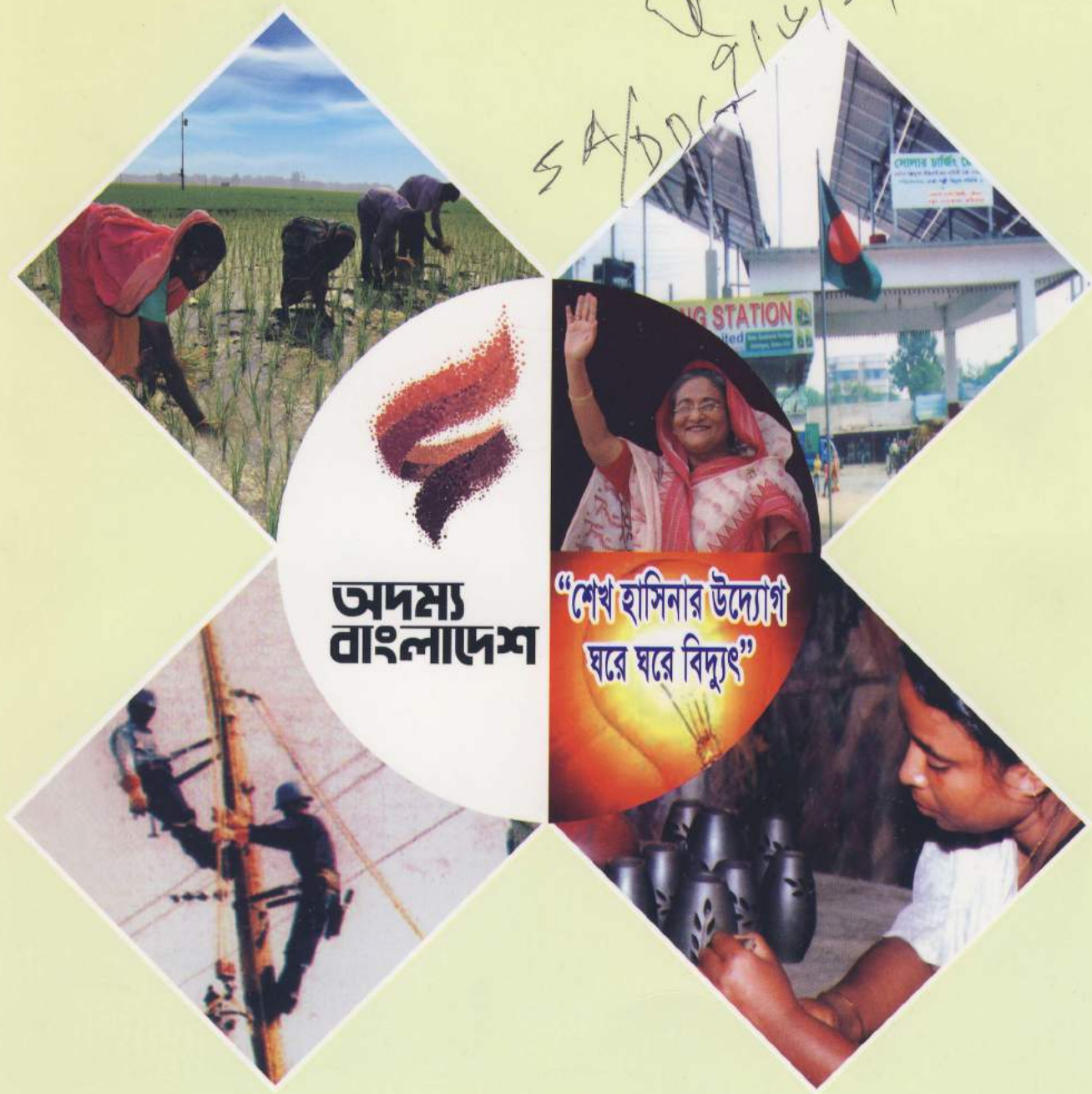


ANNUAL REPORT 2015-2016

শেখ হাসিনার উদ্যোগ
ঘরে ঘরে বিদ্যুৎ



৭/৬/১৭
SA/DO/১৬/২৭



অদম্য
বাংলাদেশ

“শেখ হাসিনার উদ্যোগ
ঘরে ঘরে বিদ্যুৎ”



Bangladesh Rural Electrification Board

Nikunja-2, Khilkhet, Dhaka-1229.

April, 2017



ANNUAL REPORT 2015-2016

শেখ হাসিনার উদ্যোগ
ঘরে ঘরে বিদ্যুৎ



ISO 9001:2008
ISO 14001:2004
OHSAS 18001:2007 CERTIFIED

Bangladesh Rural Electrification Board
Nikunja-2, Khilkhet, Dhaka-1229.

Message From Chairman



It has always been a pleasure for me to bring before you a brief resumé of the Bangladesh Rural Electrification Board (BREB) every year and this year is no exception as BREB is publishing the Annual Report for the Fiscal Year 2015-2016.

Article 16 of the great Constitution of the People's Republic of Bangladesh adopted in 1972 under the leadership of the Father of the Nation Bangabandhu Sheikh Mujibur Rahman promises "The state shall adopt effective measures to bring about a radical transformation in the rural areas through the promotion of an agricultural revolution, the provision of rural electrification, the development of cottage and other industries, and the improvement of education, communications and public health, in those areas, so as progressively to remove the disparity in the standards of living between the urban and the rural areas."

It was the lifelong dream of The Father of the Nation to establish a country that will be free of every kind of disparity and be economically solvent and he considered electricity as the prime mover for the expected change. In his deliberation on 07 July, 1975 he instructed "Nothing goes without electricity. 15% people living in urban areas have electricity, but 85% people living in rural areas don't have. Supply electricity in country side and control flood. Then, we need not to import food in next few years."

To fulfill the dream of the great leader and constitutional obligation the Government of Bangladesh took initiatives to provide electricity to rural Bangladesh. For this purpose Bangladesh Government appointed M/S. Commonwealth Associates & National Rural Electric Cooperative Association (NRECA) to conduct feasibility study for providing electricity to rural Bangladesh. As per NRECA's recommendation to establish Cooperatives (PBSs) for conducting Area Coverage Rural Electrification programme under the direct control of an apex body, Bangladesh government established Rural Electrification Board. In 2013 the Board was renamed as "Bangladesh Rural Electrification Board" according to the Rural Electrification Board Act 2013. The relationship between BREB & PBS is that the earlier one is a statutory body & the later one is a cooperative body. At present 80 Palli Bidyut Samities (PBS) under Bangladesh Rural Electrification Board (BREB) are engaged in Rural Electrification (RE) program throughout the country. Presently the total demand of electricity of these PBSs is nearly 5,500 MW which amounts to almost 55% of country's total supplied electricity and the sale of electricity is 1200 crore taka per month.



In Vision 2021 Hon'ble Prime Minister Sheikh Hasina said that her government will provide reliable and quality electricity to all by 2021 at an affordable cost. As part of materializing this aim about 70% of rural areas have already been covered under electrification network and we are fully aware of the demand of electricity of the rest of the areas of the country. Since December, 2015 "Upazilla wise 100% electrification" programme has been going on as part of "Sheikh Hasinar Udyog-Ghore Ghore Bidyut", an innovative plan of the Honorable Prime Minister. According to this plan BREB will provide electricity to 100% areas of the 460 upazillas under its jurisdiction within 2018. To achieve this milestone 213 Upazillas will be brought under electrification within 2017 and within December 2018 the rest 247 will be brought under electrification.

Securing financial sustainability of the system is a major area of focus for which BREB is working relentlessly. The organization has put strong emphasis on reducing System Loss & Accounts Receivable and on improving Bill Collection. At present, the percentage of System Loss stands at 10.85%. Moreover, BREB is following Bangladesh Energy Regulatory Commission's methodology of providing cross subsidy from the solvent PBSs to the financially weaker ones. PBSs incur losses due to poor consumer mix and less selling price than purchase cost. To make the PBSs profitable BREB is putting strong focus on issues like cost based tariff, promotion of high tariff consumers, minimization of equipment wastage, reduction of overhead cost etc.

As part of ensuring the use of renewable energy BREB as a pioneer of this sector has taken steps to install eight solar charging stations for charging batteries of Easybike & Autorickshaw. Among these four stations are now in operation. Solar plants each having 30 Kw & 40 Nos. of solar irrigation pumps have been installed in 15 Upazilla headquarters & in different areas respectively. Moreover, a project proposal to install 2000 solar irrigation pumps through ADB funding is under process.

The success and achievement of the program is being lauded by the donor countries and development partners as well as by other countries. Currently, for system expansion, capacity building & development and efficiency improvement, BREB is implementing 16 projects in total. Different projects of RE program have been financed both by Bangladesh government and development partners like WB, USAID, ADB, IDB, JICA, AIIB, JBIC, CIDA, OPEC, KOICA, JDRG, GTZ, EDCF, DFID.

Presently online application for new connection is available in RE program as part of materializing the dream of digital Bangladesh. To facilitate the consumers bill collection activities are being conducted through 23, 630 nos collection points of Teletalk Bd. Ltd, Digital Information Center (DIC) and online banking. Intelligent Meter Reading and Analytics System (IMRAS), the digital meter reading system of RE program has successfully been implemented as a pilot project. Besides, BREB arranges video conferencing with 80 PBSs at the same time. Moreover, to ensure transparency and accountability, procurement activities in RE program are going on through e-GP.

BREB achieved ISO 9001 certificate in 2013 as a recognition of its quality work and achieved IMS certificate in 2016 as it has ensured a healthy working environment for its employees. BREB has been achieving KPI bonus for 3 consecutive years by improving the performance of the PBSs. Moreover, in 2015-2016 fiscal year BREB has obtained 99.95% marks which is one of the highest among the organizations under Power Division. Besides, BREB has been awarded as the highest VAT paying organization. Moreover, as a recognition of its contribution in providing quality electricity to rural areas of the country, BREB was awarded as the Best Government Organization in Power Sector in 2016.

RE program has direct positive impact on the socio-economic development of country's rural areas. Due to the expansion of electricity literacy rate has increased significantly; there has been continuous promotion of health and family welfare; modern technology is becoming more and more available even to the remotest corners of the country. Moreover, RE program has created increased opportunity for employment as a result of the expansion of industries in rural areas. There has been a silent revolution in agriculture making the country a food surplus one, a success which largely depends on the successful implementation of RE program. Poverty alleviation programme in rural areas has achieved significant success as the consequences of increased productivity and huge employment opportunity. Besides, radical change has occurred in health and sanitation system of the country. As a result, life expectancy has improved while child mortality rate has decreased drastically.

As a whole RE program has remarkable contribution to the GDP growth of the country. The total number of consumers of BREB at present is 1.8 crore of which the number of irrigation consumers is 3.25 lacs and number of charitable institution is 14,841.



Moreover, BREB will provide electricity connection to 11,957 nos primary schools and 16,500 nos maternity clinics in priority basis. Besides, within June 2017 the number of consumers will reach the milestone of 2 crore. To provide electricity to this huge number of consumers BREB has 3.35 lacs Km energized distribution line and established 779 Nos sub-stations having capacity of 8,550 MVA.

Since inception RE programme has achieved remarkable success because the Program has a very strong foundation in the form of an apex body. Moreover, centralized policy, decentralized implementation & management system, standard practise & procedures, strong financial support, prioritized investment, zero tolerance against corruption, visionary leadership, team work, multidirectional capacity building, effective monitoring tools, consumers' participation, disconnection for non-payment program etc. have contributed hugely to the success of RE program. In spite of achieving huge success RE program faces multifarious challenges like making the PBSs financially viable, establishing grid sub-stations closer to load centres, minimizing system interruption, reducing system loss to Single Digit, ensuring system automation etc.

As an electricity providing organization it is our moral obligation that we address to the complaints of all class of consumers and take effective measures to redress those within the shortest possible time. During the perpetual journey of fulfilling the constitutional obligation RE program has accomplished a great deal to achieve a place which is mountainous in the truest sense of the term and has earned trust and appreciation not only throughout the country but also in abroad. So, it is our duty to continue this program with integrity, responsibility and transparency. This annual report portrays the various aspects along with the present and future undertakings of RE program.

Finally, I take this opportunity to convey my sincere thanks and appreciation to all who have contributed towards enriching this Annual Report.

Major General Moin Uddin
Chairman
Bangladesh Rural Electrification Board



Preface



It is indeed a great opportunity for me to publish the 'Annual Report' for the Fiscal Year 2015-16 which includes the salient feature of financial, technical and management activities of RE program round the fiscal year. This report contains a positive comparison of last 38 years of RE Activities with 8 years progression of present government, achievements of BREB in 2015-16, Planning for Vision 2021, different targets of BREB for 2016-17, Digital activities, Upazila cent percent electrification program, present activities and future planning of BREB, balance sheet for 2015-16 etc. Besides these all other regular topics are available as before.

Director Public Relation is solely responsible for publishing the Annual Report timely. I convey my sincere apology as the publication of the Annual Report is already delayed due to unavoidable situation. But it is our sincere confession and commitment for kind consideration that we will take all out attempt to gather the information earlier to publish the report in time .

My sincere gratitude and thanks to my authority, all of my colleagues and all concerned to provide me advice, information and support. Despite all of our endless effort and sincerity there may have some limitations on this report and criticism may be raised but we will accept it in open mind and positively to prepare and publish a better Annual Report in future. Thanks everybody for their kind patience to go through it.

With best regards.

Sincerely yours.

Muhammed Khaled Hossain
Director
Public Relation Directorate.



1. Vision and Mission	01
2. Milestones	02
3. Future Planning	03
4. Geographical Area Demarcation Map of PBSs	04
5. Features of RE Activities	05-10
6. Composition of the Board	11-16
7. Name of the Ex-Chairmen, BREB	17-18
8. FUNCTIONS OF BREB	19
9. RE Program : Present activities and future planning	20-24
10. BREB's Renewable Energy Program	25-29
11. Palli Bidyut Samities at a Glance	30-43
12. Name of the Completed & On Going Projects	44-47
13. Project-wise Donor & Foreign Exchange Contribution To Different Approved Re Projects	48-58
14. Foreign Assistance for RE Program in Bangladesh	59-61
15. Voice of Iamge: Socio-economic Impacts of RE Programme.	62-63
16. Statistical Information & Graph	64-77
17. Important Events of RE Programme	78-80
18. DSL Receive Statement	81-84
19. List Of Sub-stations	85-100
20. BREB Training Activities	101-104
21. System Loss Reduction Initiatives in RE Program	105-106
22. Performance Target Agreement (PTA)	107-109
23. Success Behind RE Programme in Bangladesh	110
23. Auditor's Report	111-142
24. Vote of Thanks	143



Vision and Mission

Vision
Electricity for
all by 2021

Mission

Provide quality, reliable and affordable electricity at grass root level through an efficient distribution system in a democratic manner.

Milestones (Last 5 years):

- 2017: Completion of 100% electrification of 10 Upazilas inaugurated by the Hon'ble Prime Minister. The number of Upazilas with 100% electricity connection now stands at 16.
- 2016: Awarded for Best Government Organization in Power Sector.
- 2016: Achieved IMS (ISO 9001:2008, ISO 14001: 2004, ISO 18001:2007) Certificate.
- 2016: Inauguration of Upazila 100% electrification programme by the Hon'ble Prime Minister. 06 Upazilas were brought under 100% electrification.
- 2015: Electrification of 53 nos former enclaves inaugurated by the HPM.
- 2015: Uniform salary pattern for the PBSs.
- 2014: Exempt from VAT & penalty interest by NBR of tk. 101.75 Crore as meter rent of consumers.
- 2014: Installation of country's first Solar Charging Station at Keranigonj, Dhaka.
- 2014: Achieved KPI bonus (both BREB & PBS) for the first time.
- 2013: Awarded as the highest VAT payer.
- 2013: Achieved ISO 9001:2008 certificate for Quality Management System.
- 2013: REB Act 2013 passed in the great National Parliament.



Future Planning

- Ensure electricity for all by 2021.
- Increase the number of consumers to 2 crore within June 2017.
- Increase the number of villages under total electrification to 84,000.
- To undertake project for installing 3.75 lacs pre-paid meter.
- To undertake project for replacing 5 million electro mechanical meter with pre-payment meter.
- Project for replacing 1.20 lacs overloaded distribution transformers.
- Project for replacing 2 lacs diesel pumps with solar irrigation pumps.
- Project for automation of existing sub stations & smart grid.
- Increase the number of substations to 1,120 nos with a total capacity of 12,800 MVA.
- Installation of 2 lacs solar irrigation pumps.
- Reduce system loss to single digit.
- Maintenance of solar irrigation pumps.
- Maintenance of existing distribution lines & 33/11 KV sub stations.



Features of RE Activities At a Glance (As on Feb' 17)

No of PBSs	: 79
Consumers	: 18 Mil (70% access)
Distribution lines	: 3,35,000 km (50/km)
No of 33/11 kv sub-stas	: 779 (8,550 MVA)
Peak demand	: 5,500 MW
System loss	: 10.85%
Bill collection	: 98%
Monthly sales	: Tk 1200 Cr (\$150 Mil)

A Comparison of RE Activities: 30 Years vs 08 Years

Description	1978-2008 (30 years)	2009-2016 (8 years)	Comparison
Consumer Connection	74 lacs	1.06 crore	2.5: 13
Supply of Electricity (MW)	2,000	4,400	2.2 times increase
System Loss (%)	15.65	10.85	4.71 times decrease
Monthly Sale of Electricity (crore Tk)	250	1,200	4.8 times increase

Achievements of Fiscal Year 2015-2016

3.7 million new connections.
Construction of 32,000 km electric lines.
Construction of 94 Sub-stations having capacity of 930 MVA.
5 new projects at an estimated cost of Tk. 9,638 crore.
780 procurements through e-GP.
Online application for new connection.
Bill collection through SMS & Digital Information Centre.
Installation of solar charging station.

Targets for Fiscal Year 2016-2017

- Provide 4.4 million new connections.
- Construct 45,000 km distribution line.
- Install 84 Sub-stations with total capacity of 800 MVA.

Digital Activities

- ❖ Video Conferencing (with all PBSs at the same time)
- ❖ IMRAS (Intelligent Meter Reading & Analytics System)
- ❖ MyPBS (a one point customer service)
- ❖ TMLM (Transformer Maintenance & Load Management) Software
- ❖ On-line Procurement (e-GP)
- ❖ On-line Bill Collection through SMS, UDC and Banking
- ❖ On-line Store Management
- ❖ On-line Recruitment
- ❖ On-line Application and consumer connection
- ❖ KPI Software (MIS & Billing)
- ❖ Integrated Billing Software (Under development stage)
- ❖ E-Filling management system (Under development stage)



Plan for Implementing Vision-2021

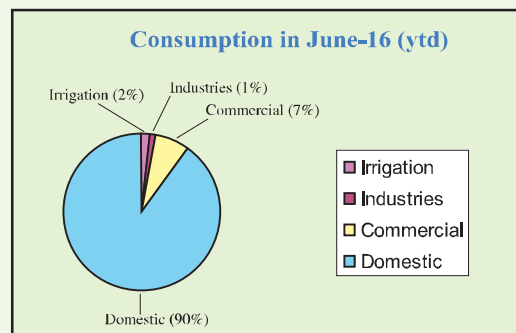
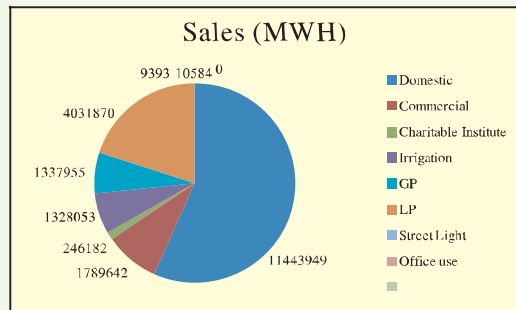
Description	June'16	December'16	December'17	December'18	December'21
Consumers (crore) Percentage	1.58 (70%)	1.75 (76%)	2.00 (87%)	2.20 (95%)	2.30 (100%)
Demand (MW)	4,800	5,200	7,300	8,000	9,200

Capacity Buildup

- 1.02 Lakhs km new electric lines were constructed taking the total constructed line to 3.30 lakhs km.
- 238 new Sub stations with total capacity of 3200 MVA have been installed. The total capacity of BREB Sub stations now stands at 8220 MVA.
- Power taking capacity increased from 2300 MW to 7300 MW.
- Average system loss now stands at 11.07%, a decrease by 3.10% from previous rate of 14.15%.
- Transformer burning rate reduced from 20% to less than 4%.
- Average monthly sale of electricity is now Tk 1200 Crore, an increase by 815 Crore from previous monthly sale of Tk 385 Crore.

Consumer Connections

- The total number of consumers of 80 PBSs of BREB is now 1.78 Crore.
- From July 2015 to November 2016, 53 lakhs consumers were connected. Average consumer connection per month is now more than 03 lakhs.
- Within June 2017 the total number of consumers will reach 2 Crore.



Upazila Wise 100% Electrification Programme

- ❖ 06 upazila with electricity in 100% areas were inaugurated by HPM on 13 August 2016.
- ❖ 10 more upazilas were inaugurated by HPM on 01 March 2017.
- ❖ All 460 upazilas under BREB's jurisdiction will be brought under 100% electrification by December 2018.



Target for Upazila 100% Electrification

Timeframe	Number of Upazilas	Status
13 August 2016	06	Inaugurated
01 March 2017	10	Inaugurated
31 March 2017	30	Ready for Inauguration
June 2017	86	In Progress
December 2017	81	In Progress
June 2018	136	In Progress
December 2018	111	In Progress
Total	460	

Upazila wise 100% Electrification Programme



Renewable (Solar) Energy

- ◆ 04 Solar Charging Stations each with a capacity of 30/21 KWP have been constructed and 04 more are under construction for charging batteries of Easy Bike, Auto Rickshaw etc.
- ◆ 40 Solar Irrigation Pumps have been installed.
- ◆ Solar Panels each with a capacity of 30 KWh have been installed in 15 Upazilla headquarters.
- ◆ A project to install 2000 Solar Irrigation Pumps with the aid of ADB is under process.

Electrification of Economic Zones

A MoU between BEZA & BREB has been signed for the electrification of 37 economic zones approved by Bangladesh Economic Zone Authority (BEZA). These economic zones are under the jurisdiction of 23 PBSs.

Implementation of SDG

Goal 7 of Sustainable Development Goals says, "Ensure access to affordable, reliable, sustainable and modern energy for all by 2030. In compliance with this goal BREB is working to:

- ◆ Ensure universal access to energy service.
- ◆ Increase share of renewable energy.
- ◆ Double the rate of improvement in energy efficiency.

Awards

- ◆ BREB has achieved IMS (QMS 9001:2008, EMS 14001:2004, OHSAS 18001:2007) certificate for accountability and maintaining quality of work.
- ◆ Awarded as the "Best Government Organization" in Power Sector by Hon'ble Prime Minister in 2016.
- ◆ Awarded as the highest VAT payer at national level in 2013-2014.

Financial Status of the System

- ◆ Average selling price (Tk 6.06/unit) is less than purchase cost (Tk 4.23+0.28+2.11 =Tk 6.62/unit).
- ◆ Category/ slab wise selling price (Tk 3.74 - 9.80/unit).
- ◆ 16.5 Mil (92%) consumers are domestic/agriculture based, paying less than purchase cost.
- ◆ 12.5 Mil (70%) use only 75 units paying Tk 275 (\$3.5) /month.
- ◆ PBSs incur losses due to poor consumer mix.

Ensuring Financial Stability of the System

- ◆ Cross subsidy from the solvent PBSs to the financially weaker ones.
- ◆ Proposal to increase tariff sent to Bangladesh Energy Regulatory Commission (BERC).
- ◆ Mobile Court & Night Patrolling for identifying illegal connection.
- ◆ Cost based tariff.
- ◆ Accelerating load growth.
- ◆ Promoting high tariff consumers.
- ◆ Reducing system loss.
- ◆ Minimizing equipment wastage.
- ◆ Reducing overhead cost.

Good Practices at BREB

Financial Facilities for BREB/PBS Personnels

1. Electricity Allowance for BREB/PBS personnel.
2. Employing disabled linemen to comparatively easier works as well as allow them to continue in their respective posts.
3. Increase of Education Allowance for PBS officers.
4. Provision of Education Allowance for the children of contractual employees.
5. Increase of Meter Readers'/PCMs' job tenure.
6. Double increase of GMs/DGMs/AGMs Education Allowance & other allowances.
7. Providing the best GMs with Letter of Appreciation & opportunity for foreign tour.
8. Recruitment/promotion through creating posts of Senior General Manager & Deputy General Manager.
9. Providing the employees of PBSs with honoriam equivalent to one month's basic salary & Letter of Appreciation for collecting fines for illegal connection and for remarkable contribution to RE programme.

Implementation of National Integrity Strategy: Measures at BREB

1. There are two different integrity committees for BREB & individual PBS respectively for implementing Integrity Strategy.
2. Honesty & Integrity related topic has been included in each training course of the Board.
3. Implementation of uniform salary pattern instead of 4 different patterns for all PBSs .
4. Risk Allowance for Line crew.
5. One stop service center at every PBS.
6. Establishing Central Complain Center.
7. Display of Citizen Charter at every PBS.
8. Circulation of Posters, stickers inscribed with message against corruption.
9. Addressing of Gender Issue by employing only women in the Billing Section of the PBSs.
10. Online application for new connection.
11. Public Hearing Day at BREB & PBSs.
12. Procurement through e-GP.
13. Subsidy for irrigation consumers.
14. Dhaka PBS-1 is providing its consumers with ambulance service. This PBS provided ambulance service during Rana Plaza tragedy.
15. Area Directors of the PBSs are elected by direct vote of the consumers, unique example of grass root democracy.
16. Reinstate the disabled linemen due to accidents in electric lines, a glaring example of humanity.
17. Initiative for implementing e-filing for increasing efficiency and reducing time, cost & paper work.
18. Elimination of salary discrimination prevailing between PBS employees & those of other utility providing organizations.
19. Retirement age of PBS employees is extended to 60 years.
20. Conducting Management Audit, Internal Audit, Loan & Audit regularly for ensuring consumer service, transparency, accountability & quality of work.
21. KPI & PTA agreement with the government & PBS respectively for ensuring accountability & financial ability of the organization.
22. For the entertainment of the officers & staffs sporting events, picnic, cultural functions etc. are organized by Krira O Songskriti Kalyan Parishad (KRISKOP).
23. Provide house loan to all the employees.
24. Maternity leave upto 6 months for lady employees.
25. Almost 100% achievement of ADP target of the projects.
26. Staff meeting of officers and other employees presided over by the Chairman for reducing grievances.



Composition of the Board



ISO 9001:2008
ISO 14001:2004
OHSAS 18001:2007 CERTIFIED

“Supply electricity in country side and control flood. Then, we need not to import food in next few years.”
-Bangabandhu

Composition of the Board



Major General Moin Uddin



Md. Yeakub Ali Patwary
Member (Administration)



Md. Mizanur Rahman Khan
Member (D & O)



Md. Abdus Sattar Biswas
Member (PBS Management) C.C



Md. Ataul Hoque Mollah
Member (Finance)



Sunil Chandra Dey
Member (P&D)



A B M Mizanur Rahman
Bangladesh Power
Development Board



Dr. Md. Saydur Rahman Salim
Bangladesh Agricultural
Development Corporation



Begum Aklima Jahir Reeta
Bangladesh Rural
Development Board



Rama Rani Roy
Bangladesh Small &
Cottage Industries Corporation



Masum Al Beruni
Power Grid Company of
Bangladesh



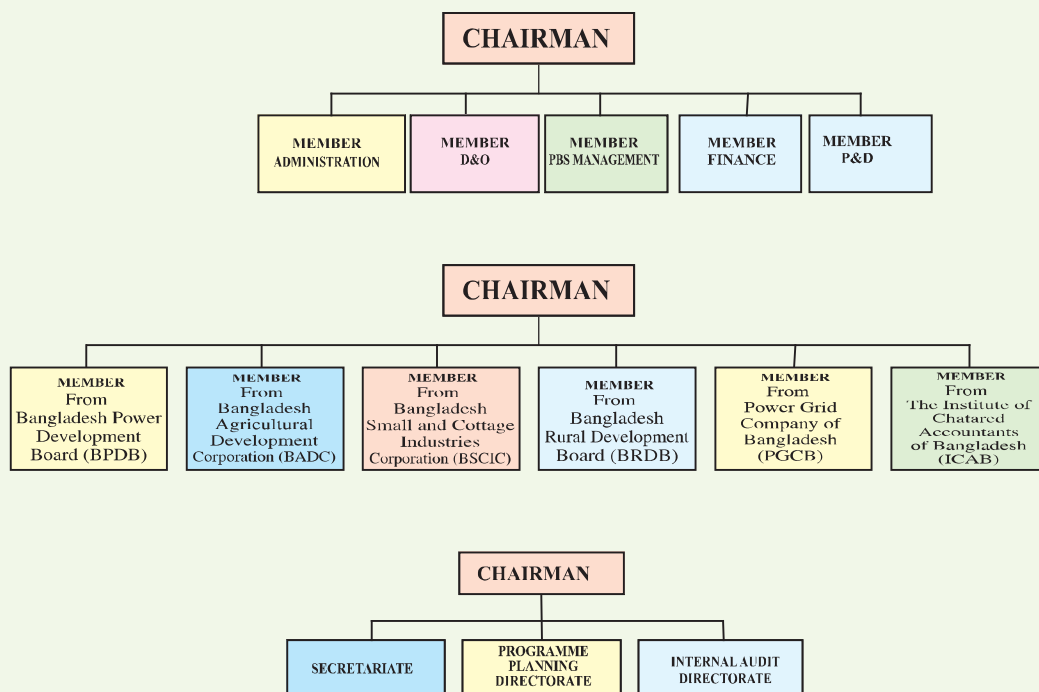
A F Nesaruddin, FCA
The Institute of Chartered Accounts
Of Bangladesh



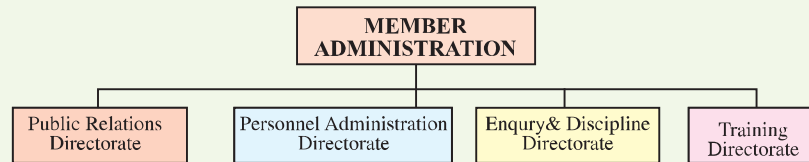
COMPOSITION OF THE BOARD

- The Board consists of a Chairman and five full time Members.
- In addition there are six part time Members who attend Board meetings only. The board is a body corporate with perpetual succession.
- The Chairman and five full time Members are appointed by the Govt.

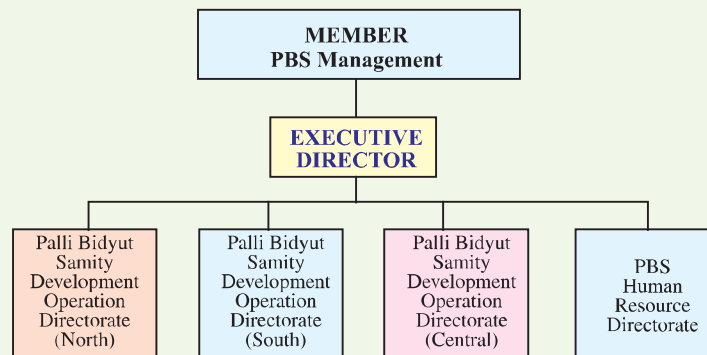
ORGANIZATIONAL SET-UP OF BREB



- Secretariate is responsible for recording the minutes of the Board meeting and issuance of Board decision for execution. Secretariate is also responsible for legal matters and expatriate consultant administration.
- Programme Planning Directorate is responsible for formulation of new RE projects, preparation of Annual Development Budget, securing foreign financing, undertaking impact evaluation of the RE projects and submission of Development Reports to the Govt and development partners.
- Internal Audit Directorate is responsible for ensuring financial control and discipline of various offices of BREB

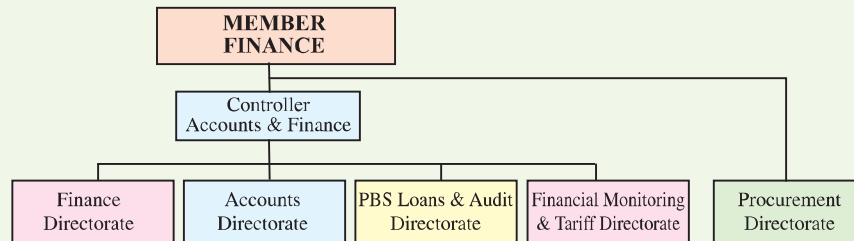


- Public Relations Directorate is responsible for media coverage, publication of advertisement in the newspapers, publication of annual report and different printing works.
- Enquiry & Discipline Directorate is responsible for conducting enquires against different allegations of BREB/PBS officials and take appropriate actions with the approval of the competent authority.
- Personnel Administration Directorate is responsible for recruiting, transfer, posting, administrative orders, employees retirement benefit and all associated service related matters.
- The Training Directorate is responsible for conducting the training of BREB/PBSs officials and employees, preparation of proper curriculum for training activities, undertaking departmental examinations and selection of employees for foreign and local trainings.

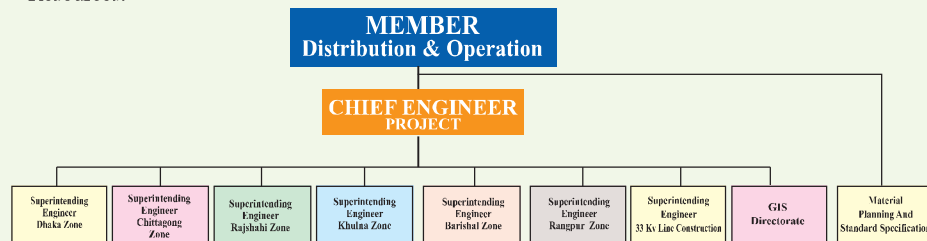


- Executive Director is responsible for overseeing the operational and management activities of the PBSs.
- Palli Bidyut Samity Development & Operation Directorate North/South/ Central are responsible for the overall management and monitoring of the PBSs within their own jurisdiction. Existing 79 (Seventy eight) PBSs are divided within these three directorates for their functional and administrative activities.
- PBS Human Resource Directorate is responsible for the recruitment, transfer, posting & promoting of PBS officials.

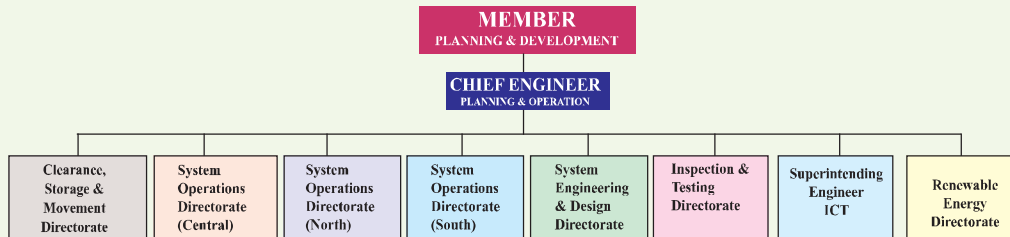




- Controller is responsible for the overall financial management of BREB and the PBSs including budgetary control.
- Finance directorate is responsible for release of fund from the Govt. PBS financial management monitoring, budget clearance & release of fund, debt service liabilities etc.
- Accounts directorate is responsible for payment of employee's financial benefit, contractors' payment, management of BREB fund etc.
- Palli Bidyut Samity Loans & Audit Directorate is responsible for allocation of PBS annual development budget, loan reconciliation, PBS annual audit etc.
- Procurement Directorate is responsible for procurement of project related and other materials through international and local competitive bidding within the framework of the annual development budget and the provision of the loan agreement.
- Financial Monitoring & Tariff Directorate is responsible for Proposing & Implementing Financial Management of the PBSs and determining PTA agreement with the PBSs in compliance with the rules & regulation of Ministry of Power, Energy & Mineral Resources.



- Chief Engineer (Project) is responsible for overall constructional activities of BREB/PBS which involves electrical line, sub-stations and civil constructions.
- Material Planning and Standard Specification Directorate is responsible for preparation of material specification, materials indent and allocation of materials to the project for line construction.
- Superintending Engineers under the directive of the Chief Engineer (Project) are responsible for management, supervision and monitoring of line substation and civil construction within their own jurisdiction. They are also responsible for management of Consultants and contractors in the field level.
- Superintending Engineer 33 Kv. line construction is responsible to construct 33 Kv. source line from BPDB/DESA Grid Substation.
- GIS Directorate is responsible for preparing map for constructing 33KV lines.



- Chief Engineer (Planning and Development) is responsible for Engineering planning, Design and Operational activities of the PBSs
- Clearance, Storage and Movement Directorate is responsible for clearance of materials from the customs, storage of materials to the warehouse and dispatch of materials to the project, PBS warehouse.
- System Operations Directorate is responsible for system operation and maintenance of the PBS line and sub stations.
- System Engineering and Design Directorate is responsible for line design, approval of line design, system study, preparation of key map and preparation of master plan.
- Inspection & Testing Directorate is responsible for pre-shipment & post landing inspection of imported and local materials and equipments.
- Superintending Engineer ICT is responsible for developing & maintaining any software needed for overall RE system and monitoring ICT activities.
- Renewable Energy Directorate is responsible for monitoring the overall activities of Renewable Energy programme in RE system.



Name of the Ex-Chairmen, BRET



ISO 9001:2008
ISO 14001:2004
OHSAS 18001:2007 CERTIFIED

“Supply electricity in country side and control flood. Then, we need not to import food in next few years.”

-Bangabandhu

Name of the Ex-Chairmen, TR&B



Brigadier Sabihuddin Ahmed
02/01/1978-25/06/1986



Brigadier Mohammad Abdul Halim
26/06/1986-15/05/1989



Brigadier Mohammad Gholam Mowla
15/05/1989-31/08/1991



Brigadier Zahed Latif
07/10/1991-27/01/1993



Brigadier Mohammad Enamul Huq
27/01/1993-05/10/1997



Brigadier M A Malek Mollah
05/10/1997-04/06/2000



Mezbah Uddin Ahammad
28/06/2000-11/09/2001



Ziaul Islam Chowdhury
11/09/2001-30/12/2004



Dr. A K M Helaluzzaman
17/01/2005-30/04/2006



M/Md. Tauhidul Islam
30/04/2006-12/10/2006



Md. Habib Ullah Majumder
09/11/2006-08/02/2009



Dr. Nasiruddin Ahmed
08/02/2009-08/03/2009



Bhuiyan Shafiqul Islam
18/03/2009-02/10/2011



FUNCTIONS OF BREB

Government of Bangladesh, has empowered BREB to discharge the following responsibilities:

- ❖ Establish electricity generation, transmission, transformation and distribution system in the rural and semi-urban areas of Bangladesh.
- ❖ Take measures for effective use of electricity to foster rural development such as development of agriculture and establishment of rural industries.
- ❖ With the approval of the govt. determine the criteria for Rural Electrification and associated works, conduct surveys and feasibility studies and prepare schemes for establishment of electrical system in the rural areas.
- ❖ Submit reports and project proposals to the govt. for approval and to execute the approved projects
- ❖ Take over distribution lines, sub-stations and assets from Bangladesh Power Development Board and Dhaka Electric Supply Authority (DESA) and arrange for their management.
- ❖ Organize the potential consumers of electricity into formal and informal groups, such as Palli Bidyut Samities, societies, associations and companies for the purpose of execution and management of schemes and providing related services.
- ❖ Prescribe by-laws for the Palli Bidyut Samities and other groups for their registration with the board and determine the manner of their functioning.
- ❖ Receive grants and loans from the govt. and other bodies and individuals for creating funds for the purpose of carrying out its business. Advance funds on such terms and conditions as it may determine to any samity or other group for the execution of the approved projects.
- ❖ Hand over to any Palli Bidyut Samity or other group complete schemes for operation and maintenance.
- ❖ Organize effective program for preparation, execution, operation and management of rural electrification program.
- ❖ Prescribe standards for works, equipments, operations, maintenance, procurement, warehousing, personnel and fiscal administration and other aspects of management to be followed by the Board and the Palli Bidyut Samities.
- ❖ Prescribe relending terms for the Palli Bidyut Samities, borrowing funds from the government and prescribe regulations for project appraisal and credit administration.
- ❖ Enter into any business including manufacture of electric equipments and enter into any contract and arrangements with others for efficient discharge of program activities.
- ❖ Approve the rate of electricity to be levied by the samities for sale of electric power.
- ❖ Appoint such officers and other employees and engage such consultants, advisors, auditors and contractors as it may deem necessary for the performance of the functions.

*RE Program : Present activities and future planning.
(Up to June 2016)*



ISO 9001:2008
ISO 14001:2004
OHSAS 18001:2007 CERTIFIED

“Supply electricity in country side and control flood. Then, we need not to import food in next few years.”
-Bangabandhu



RE Program : Present activities and future planning

Total activities of Bangladesh Rural Electrification Board (BREB)

The 1972 constitution of Bangladesh Promises electricity for all people living in the rural areas. The rural electrification activities have been successfully marching forward to implement this constitutional promise. Area coverage rural electrification is the main objective of the rural electrification activities. In the last 38 years since its inception, the rural electrification activities have earned significant success. These achieved success is appreciated at national and international level. So far, a total of 78 Palli Bidyut Samity (PBS) has been set up incorporating country's 453 upazilas.

Achieved progress (Since inception to June 2016):

- Total installed distribution line: 3,14,770 km
- Number of villages with electricity: 58,505
- Number of energized sub-station (33/11kv): 763
- Number of consumers: 1,55,86,106
- Number of small Independent Power Plants (IPP): 18 (with capacity of 522 MW)
- Number of total solar home system (SHS) connections: 37,181
- Average rate of bills collected: 98.65% (June 2015)
- System loss: Grid 12.48%, sub-station 9.97% (June 2016)
- A total of 225.55 MW electricity has been added to the national grid through 02 small IPPs initiated by REB during the tenure of the present government.

Under the Annual Development Program (ADP), BDT 4411.21 crore has been allocated for the fiscal year 2015-16 against 14 projects under Bangladesh Rural Electrification Board. Through the implementation of these projects, it will be possible to bring more new consumers under the electrification umbrella. A total of 29,841 km distribution line has been constructed/ upgraded through the ongoing projects including 10 distribution line extension projects against a total target of 30,998 km lines in the current fiscal year. The details are as follows:

SL.No	Name of the Project	Target (km)	Achievement (km)
01	Rural Electrification Expansion Dhaka Division Program-II	5,177	4,553
02	Rural Electrification Expansion Rajshahi-Rangpur Division Program-II	3,923	3,797
03	Rural Electrification Expansion Barisal Division Program-I	903	919
04	Up-gradation of Rural Electricity Distribution System (Dhaka, Chittagong & Sylhet Division)	1000	795
05	1.8 Million Consumer Connection through RE Expansion	11,550	12,284
06	Rural Electrification Up-gradation Project (Rajshahi, Rangpur, Khulna & Barisal Division)	879	539
07	Rural Electrification Expansion Chittagong-Sylhet Division Program-II	3,990	3,703
08	Rural Electrification Expansion Khulna Division Program-II	2,071	1,976
09	Rural Electrification Expansion Barisal Division Program-II	1,295	1,094
10	Rural Electrification Expansion Program in Sylhet Division & Infrastructure Development of BREB Headquarter	2190	00
11	Construction of Switching Station for Rural Electrification program	210	181
Total =		33,188	29,841

On going and future projects of BREB: On going projects' Information :

Sl. No.	Projects	Mode of funds	Fund (mil US\$)	Project period	Consumer connection	Line (km)	Sub-station (Total)		Remarks
							SS. No	Capacity (MVA)	
01	Rural Electrification Up-gradation Project (Rajshahi, Rangpur, Khulna & Barisal Division)	Loan-100%	144.28	01/07/2010 to 30/06/2017	-	4845	-	-	On going
		Grant -100%	47.34						
02	1.8 Million Consumer Connection through RE Expansion	Equity	661.38	01/01/2012 to 30/06/2017	1535981	38433	33	330	On going
03	Rural Electrification Expansion Rajshahi -Rangpur Division program-II	Grant-100%	179.23	01/07/2014 to 30/06/2018	43494	4097	42	380	On going
04	Rural Electrification Expansion Chittagong - Sylhet Division program-II	Equity-100%	216.32	01/07/2014 to 30/06/2018	510248	3902	45	430	On going
05	Up-gradation of Rural Electricity Distribution System (Dhaka,Chittagong & Sylhet Division)	Equity	165.81	01/07/2014 to 30/06/2018	-	794.778	110	1720	On going
		Loan	481						
		Others	25.64						
06	Rural Electrification Expansion Dhaka Division program-II	Equity-100%	210.94	01/07/2014 to 30/06/2018	43279	4876	50	565	On going
07	Construction of Switching Station for Rural Electrification program	Equity	15.56	01/07/2014 to 30/06/2016	-	181	-	-	On going
		Others	0.02						
08	Rural Electrification Expansion Khulan Division program-II	Grant-100%	128.62	01/07/2014 to 30/06/2018	67826	19769	23	205	On going
09	Rural Electrification Expansion Barisal Division program-II	Equity-100%	107.55	01/07/2014 to 30/06/2018	3966	1094	15	99	On going
10	Technical Assistance Project for Institutional Strengthening of Rural Electrification Program	Equity	1.4	01/07/2015 to 30/06/2019	-	-	-	-	On going
		Loan/Credit							
11	Pre-payment e-metering in Dhaka Division under Rural Electrification Program (Phase-I)	Equity	13.29	01/07/2015 to 30/06/2018	-	-	-	-	On going
12	1.5 Million Consumer Connection through Rural Electrification Expansion	Equity	886.59	01/01/2016 to 31/12/2018	-	-	118	1003	On going
13	Replacement of 70,000 nos. Overloaded Distribution Transformer under Rural Electrification Program	Equity	97.00	01/01/2016 to 31/12/2017	-	-	-	-	On going
		Others	5.75						
14	Rural Electrification Expansion Program in Sylhet Division & Infrastructure Development of BREB Headquarter	Equity	179.47	01/01/2016 to 31/12/2018	-	-	31	215	On going
15	2.5 Million Consumer Connection through Rural Electrification Expansion	Equity	58.27	01/07/2016 to 30/06/2018	-	-	-	-	On going
16	Rural Electrification Expansion Barisal Division program-I	Equity	18.47	01/07/2010 to 30/06/2016	75614	2537	-	-	On going
		Loan (Istisna)	19.77						



Future Projects' Information :

Sl. No.	Projects	Project period	Project Cost (Lac. Taka)	Source of amount	Comments
01	Up-gradation, Rehabilitation and Intensification of Distribution System (Dhaka, Mymensing, Chittagong & Sylhet Division)	01/07/2016 to 30/06/2020	342107	ADB	Processing
02	Up-gradation, Rehabilitation and Intensification of Distribution System (Rajshahi, Rangpur, Khulna & Barishal Division)	01/07/2016 to 30/06/2020	305752	ADB	Processing
03	Pre-payment e-metering In Dhaka Division under Rural Electrification Program (Phase-2)	01/07/2016 to 30/06/2019	43320		Making process DPP is running
04	Rural Electrification Up-gradation Project (Rajshahi, Rangpur, Khulna & Barisal Division) Phase-2)	01/07/2016 to 30/06/2020	486407	JAICA/ KfW	Making process DPP is running
05	Replacement of Overloaded Distribution Transformer Providing Reliable Electricity under Rural Electrification Program	01/07/2016 to 30/06/2019	139000	G to G (China)	Making process PDPP is running
06	System loss reduction by replacing 5 Million Electro-mechanical Energy meter with Electronic Energy Meter.	01/07/2016 to 30/06/2020	475000	G to G (China)	Making process PDPP is running
07	5000 No Solar Irrigation Pump installation Project.	01/07/2016 to 30/06/2020	164566	ADB	Making process PDPP is running
08	Solar Photovoltaic Pumping Project for Agriculture Irrigation Project	01/07/2016 to 30/06/2019	45000	ADB	Making process DPP is running
09	Up gradation of 33/11 kv Substation with Bay-Breaker at Respective Project for Rural Electrification Program	01/07/2016 to 30/06/2019	300027	ADB/ KfW	Making process DPP is running
10	Modernization of BREB (Dhaka & Mymensing, Division) Distribution System by Introducing Central SCADA, smart Grid & Pre-Payment e-Metering System (Phase-1)	01/07/2016 to 30/06/2018	135720	KfW	Making process PDPP is running
11	Capacity Development Project for RE Program	01/07/2016 to 30/06/2018	9300	ADB/ KfW	Making process PDPP is running
12	Remote e-Metering for HT Consumers	01/07/2016 to 30/06/2019	105300	ADB/ KfW	Making process PDPP is running
13	Establishment of Lab Facility for Material and Equipment Testing	01/07/2016 to 30/06/2018	212000	IDA/JAICA	Making process PDPP is running

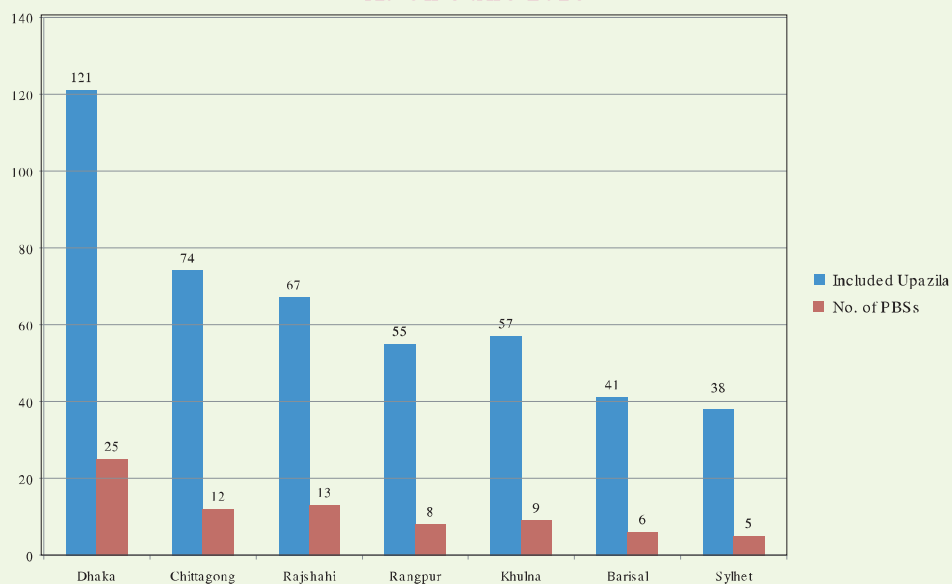
Contemporary Achievement:

Since the energization of the first village nearly 38 (Thirty eight) years ago BREB has established 78 Palli Bidyut Samities against 62 (Sixty Two) Area Coverage Rural Electrification Projects all over Bangladesh. The Approved program includes 453 upazilla covering 61 Districts. Feasibility study of project for possible electrification of the remaining 3 Districts of the country under Chittagong Hill Tracts region is under way. During the span of these thirty eight years of operational period ended on 30 June 2016, BREB has constructed a total of 3,14,770 kilometers distribution lines and 678 numbers of 33/11 KV sub-stations have been energized. Total number of electric meters installed as on June, 2016 is 1,55,86,106.

**Division wise Upazila & PBSs
in RE Program
(As on June 2016)**

Serial no.	Division	Included Upazila	No. of PBSs
1	Dhaka	121	25
2	Chittagong	74	12
3	Rajshahi	67	13
4	Rangpur	55	08
5	Khulna	57	09
6	Barisal	41	06
7	Sylhet	38	05
	Total	453	78

**Divisionwise Included Upazilas & PBSs
As on June 2016**



Renewable Energy Program



ISO 9001:2008
ISO 14001:2004
OHSAS 18001:2007 CERTIFIED

“Supply electricity in country side and control flood. Then, we need not to import food in next few years.”
-Bangabandhu

Renewable Energy Program

In today's world, rapid deployment of renewable energy is contributing significantly in energy security, reduction in carbon emissions, climate change mitigation and several economic benefits. It can be a key player to achieve 7th Sustainable Development Goal (SDG)- "Ensure access to affordable, reliable, sustainable and modern energy for all" The present Renewable Energy Policy of Bangladesh Government reflects its vision and intends to generate 10% of the total country's energy demand through green energy by 2020. To achieve 7th Sustainable Development Goal in Bangladesh perspective and make governments vision a reality BREB is performing with its excellence in line with the Government directives.

Since its inception, BREB has piloted a number of Renewable Energy projects which includes introduction of Solar Home System (SHS), Hybrid Solar Power Plant, Solar Irrigation Pump and Solar Charging Station. Under Renewable Energy Program, BREB has so far installed 37,181 nos, SHSs; 17 nos. rooftop/hybrid type rooftop solar power plants; 40 nos. solar powered irrigation pumps; and a Solar Charging Station. The total capacity of the installed plants are about 4628 kWp. The main objective of BREB Renewable Energy program is piloting new type of renewable energy projects in the context of grid power limitations & promoting the uses of alternatives energy source. Considering the financial concept of PBS i.e. "No profit, No Loss" and cost effectiveness of solar Systems, financing from development partners on renewable energy projects are always preferable.

Recently BREB has introduced a new concept, charging battery operated vehicles from Solar Charging Station through installing a 21 kWp Plant at Keraniganj (Sunny Filling station) under Dhaka PBS-4 by its own fund. This charging station is used for battery operated vehicles like Auto Rickshaw, Easy Bike, etc. In the first month of operation, this charging station has produced 1,743k WH energy to charge 545 no. vehicles. It clearly shows that, if implemented country wide , this type of charging stations can save huge amount of energy reducing undue demand on country's conventional power generation. BREB is plannig to install 7 more (total capacity will be 177 kWp) at different PBS's Sustainable and Renewable Energy Development Authority (SREDA) has agreed to contribute 50% of the capital investment for four of them.



49 kWp BREB Rooftop Solar Power Plant



30 kWp Solar Power Plant at Tungipara Upazila Complex



BREB Solar Irrigation Pump



BREB Solar Charging Station



Summary of Solar PV System and Installed Capacity:

Sl.No	Description of the System	Quantity Installed(Nos)	Installed Capacity(kWp)
1.	SHS Installed by BREB under different projects	15250	825
2.	SHS against PBS new consumer connection as per govt. rules (up to 30.06.3016)	21931	3000
3.	Roof top High School	01	2
4.	Solar Plant BRERB H/Q Training Academy Building	01	49
5.	72 PBS Office	—	42
6.	Upazilla Complex Building	15	450
7.	Solar Powered Irrigation Pump	40	239
8.	Solar Charging Station	01	21
Total Installed Capacity of PV Solar System			4628 kWp

A DPP is under process for "Solar Photovoltaic Pumping for Agricultural Irrigation Project" to install 2000 Solar Irrigation pump through ADB & GoB fund. ADB has allocated US\$ 20 million as loan and a US\$ 24 million SREP grant has also been allocated for this project. ADB has proposed a Capacity Development and Technical Assistance (CDTA) project, for detailed feasibility study and develop necessary businesses model to operate the SPV pumping systems in a sustainable manner. Another PDPP of 5000 Nos. Solar Powered Irrigation Pump project has been sent to ERD. Government of Bangladesh has exerted significant importance on expansion of renewable energy program especially for remote and off-grid areas to increase access of electricity. To facilitate the program, BREB keeps track of possible rural areas where grid electricity is not permeable for technical & financial reasons. In addition, BREB provides requested statistical data, network information for the upcoming renewable projects to IDCOL, BPDB and Power Division. At the same time BREB plays participatory role in policy framing and project implementation of renewable energy program. Above all, in line with government's commitment to provide electricity to all by 2021 and to address programs for achieving Sustainable Development Goals, BREB is vigilant to move forward and combat all challenges as well as climate change issues.

Base Load Generation :

The Bangladesh Rural Electrification Board (BREB) is charged with the responsibility to provide financial support, technical oversight and long term direction to the Rural Electrification program in Bangladesh. Throughout its 38 years history, BREB has performed exceedingly well and has risen to the challenges that have faced the establishment and continued development of this program. BREB has sponsored the foundation of 78 PBSs connecting nearly 15.6 million electric services, representing slightly over 68% of the rural population of Bangladesh. The power supply crisis it now faces represents a serious challenge to the rural electric program and correspondingly BREB is taking steps to prepare itself to provide technical leadership to overcome the obstacles this crisis has placed before to program. In the aim of alleviating the power shortage problem of the country the Ministry of Power decided to go for small scale power generation on BOO basis under the auspices of BREB and accordingly gave directives to BREB in 1998 for the construction of 10MW Power stations in financially viable PBSs.

BREB accordingly selected 3 (three) sites namely Dhaka PBS-1, Norshingdi PBS-1 and Comilla PBS-1 for implementing its 1st phase of Small scale Power generation as Pilot project. Guaranteed Net Plant capacity of each of the power station is 11 MW. Power generation of said three PBSs has already been commissioned. For successful commissioning of three small IPP, According to GOB decisions the 3 (Three) small IPP's capacity extended. After that another six small IPP has been commissioned.

**The details of running power plants are given below :
Information of IPP Generation in BREB.**

Sl No.	Name of PBS	Name of Plant	Location	Plant Capacity (MW)	Commercial Operation Date (COD)	Name of Company
1	Dhaka PBS-1	Ashulia Power Plant	Savar	11.00	01-09-2003	Summit Power Ltd.
2	Dhaka PBS-1	Ashulia Expansion Power Plant	Savar	33.75	04-12-2007	Do
3	Narshingdi PBS-1	Madhabdi Power Plant	Madhabdi Narshingdi	11.00	01-09-2003	Do
4	Narshingdi PBS-1	Madhabdi Expansion Power Plant	Madhabdi Narshingdi	24.30	16-12-2006	Do
5	Comilla PBS-1	Chandina Power Plant	Chandina Comilla	11.00	01-09-2003	Do
6	Comilla PBS-1	Chandina Expansion Power Plant	Chandina Comilla	13.50	15-11-2006	Do
7	Narshingdi PBS-2	Narshingdi Power Plant	Dogaria, Narshingdi	22.00	21-12-2008	Doreen Power GSL
8	Hobiganj PBS	Hobiganj Power Plant	Nansratpur Hobiganj	11.00	10-01-2009	Energypac CPVL
9	Sirajgong PBS	Ullapara Power Plant	Ullapara Sirajgong	11.00	02-03-2009	Summit UPCL
10	Feni PBS	Feni Power Plant	Mohipal Feni	11.00	25-04-2009	Doreen Power HTL
11	Maymensing PBS-2	Maona Power Plant	Maona Gazipur	33.00	12-05-2009	Summit UPCL
12	Narayanganj PBS	Rupganj Power Plant	Rupganj Narayanganj	33.00	09-06-2009	Summit UPCL

IPP Generation in RPCL :

In 1996, Government took a major step towards electricity generation by undertaking private sector power generation policy. Bangladesh Rural Electrification Board(BREB) took the initiative for establishment of power generation plants both in public & private sector with the approval of the Government. A public limited company named Rural Power Company Limited (RPCL) was formed in 1994 with the provision for its functioning as an Independent private power company and through active participation of BREB& 9 (nine) Rural Electric Co-operatives (PBSs). Through this company, a modern combined cycle power plant was established in Mymensingh and presently its total capacity is 210 MW. After that according to the GOB decision they installed another 02 (two) small IPPs.

Detailed information given below:

	Unit No.	Type of Pant	Plant Capacity	Commercial Operation Date (COD)/Remarks
1st Phase	1	Gas Turbine	35 MW	November 1999
	2	Gas Turbine	35 MW	
2nd Phase	3	Gas Turbine	35 MW	December 2000
	4	Gas Turbine	35 MW	
3rd Phase	STG	Steam Turbine	70 MW	July 2007
	-	Combined Cycle		
Kadda, Gazipur	-	HFO	52.112 MW	July 12 '2012
Raozan, Chittagong.		HFO	25.00 MW	May 30 '2013
		Total =	287.112 MW.	



Information of Power Purchase from Captive/Small Power/ Commercial Power Plant

SI	Name of Power Plant	Name of PBS	Capacity (M.W.)	Supply (M.W.)	Date of Agreement	Commence of Supply	Remarks
01	S. Alam Power Plant	Chittagong PBS-1	6.00	Max-03 Min-02	10/06/2007	03/05/2010	
02	Meghna Energy Ltd.	Narayangonj PBS	10.90	Max-04 Min-01	10/06/2007	09/06/2008	
03	A M Energy Ltd.	Narayangonj PBS	6.00	Max-04 Min-02	17/07/2007	22/07/2007	Irregular supply
04	Rahim Energy Ltd.	Narayangonj PBS	30.40	Max-15 Min-05	23/12/2008	26/09/2009	
05	R A K Power Pvt. Ltd.	Mymensingh PBS-2	10.00	Max-02 Min-01	20/04/2009	27/05/2009	Supply Stopped
06	United Power Generation & Distribution Co. Ltd.	Dhaka PBS-1	40	Max-25 Min-05	09/06/2013	29/05/2012	
07	Deshbandhu Power Plant	Narsingdi PBS -1	2.5	Max-02 Min-01	26/11/2009	May 2010	Irregular Supply
08	Everest Power Generation	Narayangonj PBS	25.17	Max-15 Min-05	22/11/2010	December 2010	
09	Sakura Steel Ltd.	Comilla PBS-2	4.20	Max-3.6 Min-2.6	12/02/2013	-	
10	Shahjahanullah Power Generation Co. Ltd.	Sylhet PBS-1	28.00	Max-Negotiable Min-10	09/05/2013	23/10/2013	

Under Construction Power Plant by Combined Initiative of RPCL-BPDB

SI	Name of Power Plant	Possible Location	Capacity	COD
01	RPCL-BPDB Power Gen Ltd.	Kodda, Gazipur	150 M. W. Dual Fuel (HFO/Gas)	16/08/2015

Palli Bidyut Samities at a Glance (On Alphabetical Order)



ISO 9001:2008
ISO 14001:2004
OHSAS 18001:2007 CERTIFIED

“Supply electricity in country side and control flood. Then, we need not to import food in next few years.”
-Bangabandhu



Palli Bidyut Samities at a Glance



Bagerhat Palli Bidyut Samity

Pole Ghat, Bagerhat.

Upazila Included: Bagerhat, Chitalmari, Fakirhat, Kachma Mollahat, Mongla, Rampal & Rupsha.

Date established	:	25-11-1984
Date energized	:	01-04-1986
Area in sq. km.	:	1598
No of Substation	:	08
Km. Line Constructed	:	3899
Number of Villages	:	899
Village energized	:	804
Facility Created	:	183274
Consumer connected	:	180287
Revenue collection for FY 15-16	:	99.11 %
System loss for FY 15-16	:	12.88%
Month out standing	:	1.29



Barisal Palli Bidyut Samity-1

Rupatali, Barisal.

Upazila Included: Bakergonj, Barisal, Hizla, Mehendigonj & Muladi.

Date established	:	16-04-1990
Date energized	:	01-09-1990
Area in sq. km.	:	1912
No of Substation	:	05
Km. Line Constructed	:	3313
Number of Villages	:	659
Village energized	:	415
Facility Created	:	154855
Consumer connected	:	147498
Revenue collection for FY 15-16	:	98.81%
System loss for FY 15-16	:	13.80%
Month out standing	:	1.23



Barisal Palli Bidyut Samity-2

Cadet College, Barisal.

Upazila Included: Agailjhara, Babugonj, Banaripara Gourmadi & Uzirpur.

Date established	:	14-01-1985
Date energized	:	22-09-1985
Area in sq. km.	:	837
No of Substation	:	08
Km. Line Constructed	:	3484
Number of Villages	:	535
Village energized	:	444
Facility Created	:	181465
Consumer connected	:	179088
Revenue collection for FY 14-15	:	98.82%
System loss for FY 14-15	:	13.86%
Month out standing	:	1.13



Bhola Palli Bidyut Samity

Bangla Bazar, Bhola.

Upazila Included: Bhola, Borhanuddin, Char Fasson, Daulatkhan, Lalmohan, Moopura, Mehedigonj (Part) & Tazumuddin.

Date established	:	19-03-1998
Date energized	:	05-03-1999
Area in sq. km.	:	3404
No of Substation	:	05
Km. Line Constructed	:	3376
Number of Villages	:	456
Village energized	:	266
Facility Created	:	139470
Consumer connected	:	123176
Revenue collection for FY 14-15	:	95.07%
System loss for FY 14-15	:	20.06%
Month out standing	:	2.03



Bogra Palli Bidyut Samity-1

Silimpur, Bogra.

Upazila Included: Adamdighi, BograDhunat, Dhupchanchia Gabtoli, Kahalu, Kazipur (U.P.), Namdigram Sariakandi, Sherpur, Shibgonj & Sonatola.

Date established	:	13-02-2016
Date energized	:	23-09-1986
Area in sq. km.	:	1230
No of Substation	:	08
Km. Line Constructed	:	3749
Number of Villages	:	1347
Village energized	:	1265
Facility Created	:	202136
Consumer connected	:	201745
Revenue collection for FY 14-15	:	97.16%
System loss for FY 14-15	:	12.11%
Month out standing	:	1.35



Bogra Palli Bidyut Samity-2

Betgari, Banani, Bogra.

Upazila Included: Sajahanpur, Gabtoli, Sherpur, Dhunot, Sariakandi & Sonatola.

Date established	:	13-02-2016
Date energized	:	23-09-1986
Area in sq. km.	:	1353
No of Substation	:	07
Km. Line Constructed	:	3243
Number of Villages	:	1307
Village energized	:	867
Facility Created	:	190409
Consumer connected	:	186601
Revenue collection for FY 15-16	:	97.53%
System loss for FY 15-16	:	15.38%
Month out standing	:	1.46

Palli Bidyut Samities at a Glance



Brahmanbaria Palli Bidyut Samity

South Suhilpur, Brahmanbaria.

Upazila Included: Akhaura, Banchharampur, Brahmanbaria, Kashba, Nabinagar, Nasirnagar & Sarail.

Date established	:	14-09-1995
Date energized	:	04-07-1996
Area in sq. km.	:	1943
No of Substation	:	10
Km. Line Constructed	:	5395
Number of Villages	:	1242
Village energized	:	1010
Facility Created	:	328667
Consumer connected	:	295537
Revenue collection for FY 15-16	:	100.69%
System loss for FY 15-16	:	18.69 %
Month out standing	:	0.98



Chandpur Palli Bidyut Samity-1

Hajiganj, Chandpur.

Upazila Included: Hajiganj, Kachua, Monoharganj (Part) & Shahrasti.

Date established	:	27-05-2015
Date energized	:	14-12-1981
Area in sq. km.	:	596
No of Substation	:	03
Km. Line Constructed	:	2637
Number of Villages	:	591
Village energized	:	546
Facility Created	:	194938
Consumer connected	:	190988
Revenue collection for FY 15-16	:	99.32%
System loss for FY 15-16	:	16.75%
Month out standing	:	1.08



Chandpur Palli Bidyut Samity-2

Khalishaduli, Baburhat, Chandpur.

Upazila Included: Chandpur, Motlab (North), Motlab (South), Faridgonj & Haimchor.

Date established	:	27-05-2015
Date energized	:	14-12-1981
Area in sq. km.	:	920
No of Substation	:	04
Km. Line Constructed	:	3568
Number of Villages	:	728
Village energized	:	463
Facility Created	:	214355
Consumer connected	:	209005
Revenue collection for FY 15-16	:	99.60%
System loss for FY 15-16	:	13.72%
Month out standing	:	1.11



Chittagong Palli Bidyut Samity-1

Patiya, Chittagong.

Upazila Included : Anwara, Banshkhali, Boulkhali, Karmaphuly Chandanaish, Lohagara, Patiya & Satkania.

Date established	:	02-01-1986
Date energized	:	07-03-1988
Area in sq. km.	:	1758
No of Substation	:	12
Km. Line Constructed	:	5477
Number of Villages	:	484
Village energized	:	484
Facility Created	:	341144
Consumer connected	:	309497
Revenue collection for FY 15-16	:	97.43%
System loss for FY 15-16	:	14.35%
Month out standing	:	1.31



Chittagong Palli Bidyut Samity-2

Rauzan, Chittagong.

Upazila Included: Fatikchhari, Rangunia & Rauzan.

Date established	:	03-04-1985
Date energized	:	07-09-1986
Area in sq. km.	:	1348
No of Substation	:	07
Km. Line Constructed	:	3664
Number of Villages	:	449
Village energized	:	371
Facility Created	:	245089
Consumer connected	:	239430
Revenue collection for FY 15-16	:	100.53%
System loss for FY 15-16	:	12.70%
Month out standing	:	1.18



Chittagong Palli Bidyut Samity-3

Shibpur, Sitakunda, Chittagong.

Upazila Included: Sitakunda, Mirsharai, Hathazari.

Date established	:	27-06-2005
Date energized	:	01-07-2005
Area in sq. km.	:	1218
No of Substation	:	04
Km. Line Constructed	:	2191
Number of Villages	:	297
Village energized	:	285
Facility Created	:	142832
Consumer connected	:	141317
Revenue collection for FY 14-15	:	100.74%
System loss for FY 14-15	:	15.76%
Month out standing	:	1.19

Palli Bidyut Samities at a Glance



Comilla Palli Bidyut Samity-1

Chandina, Comilla.
Upazila Included : Barura, Chandina, Debidwar & Miradnagar.

Date established	: 04-05-1979
Date energized	: 12-01-1981
Area in sq. km.	: 1021
No of Substation	: 07
Km. Line Constructed	: 4353
Number of Villages	: 1110
Village energized	: 1075
Facility Created	: 290230
Consumer connected	: 276657
Revenue collection for FY 15-16	: 98.77%
System loss for FY 15-16	: 14.38%
Month out standing	: 1.14



Comilla Palli Bidyut Samity-2

Uttar Rampur (Bishwa Road), Comilla.
Upazila Included: Brahmanpara, Burichang, Chaudagram Comilla, Laksam & Nangalkot.

Date established	: 19-12-1992
Date energized	: 01-04-1994
Area in sq. km.	: 969
No of Substation	: 08
Km. Line Constructed	: 5255
Number of Villages	: 1421
Village energized	: 1417
Facility Created	: 252736
Consumer connected	: 243826
Revenue collection for FY 15-16	: 97.82%
System loss for FY 15-16	: 14.31%
Month out standing	: 1.27



Comilla Palli Bidyut Samity-3

Gowripur, Doudkandi, Comilla.
Upazila Included : Doucandi, Titas, Homna, Meghma & Gojariya.

Date established	: 28-01-2014
Date energized	: -
Area in sq. km.	: 690
No of Substation	: 07
Km. Line Constructed	: 2289
Number of Villages	: 882
Village energized	: 871
Facility Created	: 188509
Consumer connected	: 187384
Revenue collection for FY 15-16	: 68.65%
System loss for FY 14-15	: 12.13%
Month out standing	: 1.14



Comilla Palli Bidyut Samity-4

Laksam, Comilla.
Upazila Included: Nagolkot, Laksam & Monohargonj

Date established	: 28-06-2015
Date energized	: 01-07-2015
Area in sq. km.	: 567
No of Substation	: 03
Km. Line Constructed	: 2826.40
Number of Villages	: 680
Village energized	: 630
Facility Created	: 154308
Consumer connected	: 127490
Revenue collection for FY 15-16	: 96.76%
System loss for FY 15-16	: 19.72%
Month out standing	: 1.55



Cox's Bazar Palli Bidyut Samity

Jhilongia, Cox's Bazar.
Upazila Included: Chakaria, Cox's Bazar, Maheshkhali, Ramu, Teknaf, Ukha, Naikhongchori, Lama (Part) & Peka.

Date established	: 19-12-1992
Date energized	: 05-12-1993
Area in sq. km.	: 2908
No of Substation	: 09
Km. Line Constructed	: 3696
Number of Villages	: 947
Village energized	: 802
Facility Created	: 169352
Consumer connected	: 165339
Revenue collection for FY 14-15	: 98.75%
System loss for FY 14-15	: 17.38%
Month out standing	: 1.82



Chapai Nawabganj Palli Bidyut Samity

Pukuria, Kansat, Shibjanj, Nawabganj.
Upazila Included: Bholahat, Gomastapur, Nachole, Niamatpur (Part), Nawabganj & Shibgonj.

Date established	: 15-04-1995
Date energized	: 20-12-1995
Area in sq. km.	: 1712
No of Substation	: 09
Km. Line Constructed	: 3619
Number of Villages	: 1198
Village energized	: 1191
Facility Created	: 154066
Consumer connected	: 178788
Revenue collection for FY 15-16	: 99.09%
System loss for FY 15-16	: 9.98%
Month out standing	: 1.02

Palli Bidyut Samities at a Glance



Dhaka Palli Bidyut Samity-1

Polashbari, Savar, Dhaka

Upazila Included: Kaliakair & Savar (Part)

Date established	:	13-12-1978
Date energized	:	02-06-1980
Area in sq. km.	:	486
No of Substation	:	31
Km. Line Constructed	:	2539
Number of Villages	:	488
Village energized	:	474
Facility Created	:	334190
Consumer connected	:	331604
Revenue collection for FY 15-16	:	99.47%
System loss for FY 15-16	:	7.44%
Month out standing	:	0.87



Dhaka Palli Bidyut Samity-2

Panalia, Nawabgonj, Dhaka.

Upazila Included: Dohar, Keranigonj, Nawabgonj & Srinagar (Part).

Date established	:	22-08-1999
Date energized	:	01-10-1999
Area in sq. km.	:	623
No of Substation	:	14
Km. Line Constructed	:	3731
Number of Villages	:	932
Village energized	:	932
Facility Created	:	343201
Consumer connected	:	339790
Revenue collection for FY 15-16	:	99.26%
System loss for FY 15-16	:	10.46%
Month out standing	:	1.22



Dhaka Palli Bidyut Samity-3

Genda, Savar, Dhaka.

Upazila Included: Savar, Dhamrai, Karanigonj (Part), Mirjapur (Part) & Manikgonj (Part).

Date established	:	01-01-2014
Date energized	:	01-01-2014
Area in sq. km.	:	455
No of Substation	:	14
Km. Line Constructed	:	2529
Number of Villages	:	508
Village energized	:	508
Facility Created	:	283309
Consumer connected	:	272121
Revenue collection for FY 15-16	:	98.84%
System loss for FY 15-16	:	9.80%
Month out standing	:	0.84



Dinajpur Palli Bidyut Samity-2

Joynagar, Chandipur, Fulbari, Birampur, Dinajpur.

Upazila Included: Birampur, Fulbari, Ghoraghat Hakimpur, Nawabgonj & Parbotipur.

Date established	:	04-04-1993
Date energized	:	07-04-1994
Area in sq. km.	:	1399
No of Substation	:	08
Km. Line Constructed	:	3848
Number of Villages	:	1160
Village energized	:	893
Facility Created	:	171103
Consumer connected	:	163867
Revenue collection for FY 15-16	:	94.34%
System loss for FY 15-16	:	12.02%
Month out standing	:	1.35



Dinajpur Palli Bidyut Samity-1

Uttar Gobindapur, Dinajpur.

Upazila Included: Birol, Bochagonj, Chiribandar, Dinajpur, Haripur, Kaharole, Khansama & Pirgonj.

Date established	:	30-03-1983
Date energized	:	29-12-1984
Area in sq. km.	:	2038
No of Substation	:	07
Km. Line Constructed	:	1520
Number of Villages	:	1153
Village energized	:	828
Facility Created	:	236009
Consumer connected	:	221505
Revenue collection for FY 15-16	:	97.93%
System loss for FY 15-16	:	10.64%
Month out standing	:	1.07



Faridpur Palli Bidyut Samity

Kanaipur, Faridpur.

Upazila Included: Alfadanga, Bhanga, Boalmari, Char Bhadrasan, Faridpur, Madhukhali, Nagarkanda, Sadarpur & Saltha.

Date established	:	12-10-1995
Date energized	:	21-12-1995
Area in sq. km.	:	2161
No of Substation	:	09
Km. Line Constructed	:	5148
Number of Villages	:	1806
Village energized	:	872
Facility Created	:	197931
Consumer connected	:	187991
Revenue collection for FY 15-16	:	108.04%
System loss for FY 15-16	:	12.50%
Month out standing	:	1.18

Palli Bidyut Samities at a Glance



Feni Palli Bidyut Samity

Mohipal, Feni.

Upazila Included: Chagolnaiya, Daganbhuiyan, Feni, Fulgazi, Parsuram & Sonagazi.

Date established	:	02-04-1983
Date energized	:	16-02-1984
Area in sq. km.	:	928
No of Substation	:	09
Km. Line Constructed	:	5017
Number of Villages	:	644
Village energized	:	644
Facility Created	:	291250
Consumer connected	:	288632
Revenue collection for FY 15-16	:	101.86%
System loss for FY 15-16	:	11.57%
Month out standing	:	0.94



Gaibandha Palli Bidyut Samity

Tulshighat, Gaibanda.

Upazila Included: Fulchari, Gaibandha, Gobindagonj Palashbari & Saghata.

Date established	:	02-12-1999
Date energized	:	01-03-2000
Area in sq. km.	:	1530
No of Substation	:	06
Km. Line Constructed	:	2904
Number of Villages	:	828
Village energized	:	588
Facility Created	:	156846
Consumer connected	:	155215
Revenue collection for FY 15-16	:	97.80%
System loss for FY 15-16	:	12.72%
Month out standing	:	1.47



Gopalganj Palli Bidyut Samity

Karargati, Gopalganj.

Upazila Included : Gopalganj, Kashiani, Kotalipara, Muksupur, Lohagara (Part) & Tungipara.

Date established	:	19-03-1998
Date energized	:	03-03-1998
Area in sq. km.	:	1491
No of Substation	:	06
Km. Line Constructed	:	3995
Number of Villages	:	903
Village energized	:	826
Facility Created	:	220119
Consumer connected	:	218079
Revenue collection for FY 15-16	:	97.56%
System loss for FY 15-16	:	11.64%
Month out standing	:	1.04



Gazipur Palli Bidyut Samity

Chandana, Gazipur.

Upazila Included: Gazipur Sadar, Kapasia, Kaligonj & Sripur (Part)

Date established	:	05-09-2005
Date energized	:	01-07-2005
Area in sq. km.	:	1012
No of Substation	:	24
Km. Line Constructed	:	5323
Number of Villages	:	742
Village energized	:	700
Facility Created	:	381440
Consumer connected	:	375067
Revenue collection for FY 15-16	:	98.43%
System loss for FY 15-16	:	9.91%



Habigonj Palli Bidyut Samity

Shayestagonj, Hobigonj.

Upazila Included : Ajmirigonj, Bahubal, Baniachong, Chunarughat Hobigonj, Lakhai, Madhabpur, Jagannatpur (Part), Dirai (Part), Shalla (Part & Nabigonj).

Date established	:	12-10-1980
Date energized	:	02-05-1982
Area in sq. km.	:	2772
No of Substation	:	05
Km. Line Constructed	:	4569
Number of Villages	:	2169
Village energized	:	1352
Facility Created	:	232399
Consumer connected	:	223384
Revenue collection for FY 15-16	:	98.80%
System loss for FY 15-16	:	15.22%
Month out standing	:	1.51



Jhalakathi Palli Bidyut Samity

Pratap, Jhalakathi.

Upazila Included: Jhalakathi, Kathalia, Nalchiti & Rajapur.

Date established	:	02-01-2000
Date energized	:	25-03-2001
Area in sq. km.	:	718
No of Substation	:	05
Km. Line Constructed	:	2136
Number of Villages	:	451
Village energized	:	366
Facility Created	:	89455
Consumer connected	:	77592
Revenue collection for FY 15-16	:	99.82%
System loss for FY 15-16	:	16.18%
Month out standing	:	1.24

Palli Bidyut Samities at a Glance



Jhenaidah Palli Bidyut Samity

Rautail, Jhenaidah.

Upazila Included: Harinakundu, Jhenaidah, Kaligonj
Kotchandpur, Maheshpur & Shaikupa.

Date established	:	12-10-1995
Date energized	:	09-01-1996
Area in sq. km.	:	1961
No of Substation	:	08
Km. Line Constructed	:	4694
Number of Villages	:	1145
Village energized	:	965
Facility Created	:	236755
Consumer connected	:	228066
Revenue collection for FY 15-16	:	97.25%
System loss for FY 15-16	:	12.46%
Month out standing	:	1.29



Jessore Palli Bidyut Samity-1

Tapshidanga, Jessore.

Upazila Included: Bagharpara, Chaugacha,
Jessore, Jhikargachha & Sharsha.

Date established	:	09-02-1980
Date energized	:	29-06-1981
Area in sq. km.	:	1590
No of Substation	:	14
Km. Line Constructed	:	5506
Number of Villages	:	959
Village energized	:	886
Facility Created	:	280532
Consumer connected	:	270672
Revenue collection for FY 15-16	:	98.27%
System loss for FY 15-16	:	11.30%
Month out standing	:	1.09



Jessore Palli Bidyut Samity-2

Monirampur, Jessore.

Upazila Included: Abhaynagar, Fultola, Kalia, Keshobpur Lohagora
Monirampur & Narail.

Date established	:	28-09-1979
Date energized	:	02-02-1981
Area in sq. km.	:	2002
No of Substation	:	13
Km. Line Constructed	:	5404
Number of Villages	:	1219
Village energized	:	1185
Facility Created	:	266783
Consumer connected	:	251220
Revenue collection for FY 15-16	:	92.03%
System loss for FY 15-16	:	12.34%
Month out standing	:	1.41



Jamalpur Palli Bidyut Samity

Beltia, Jamalpur.

Upazila Included: Bakshigonj, Char Rajibpur, Dewanganj, Islampur,
Jamalpur, Kazipur (Part), Madargonj, Melandaha
Raumari, Sharishbari, Kazipur (Part), Ulipur (Part) &
Fulchori (Part).

Date established	:	23-08-1984
Date energized	:	14-02-1987
Area in sq. km.	:	2492
No of Substation	:	08
Km. Line Constructed	:	5354
Number of Villages	:	2023
Village energized	:	1330
Facility Created	:	214303
Consumer connected	:	209371
Revenue collection for FY 15-16	:	102.20%
System loss for FY 15-16	:	16.38%
Month out standing	:	1.31



Joypurhat Palli Bidyut Samity

Sadar Ruad, Joypurhat.

Upazila Included: Akkelpur, Joypurhat, Kalai
Khetlal & Panchbibi.

Date established	:	25-02-1985
Date energized	:	09-02-1986
Area in sq. km.	:	965
No of Substation	:	08
Km. Line Constructed	:	3527
Number of Villages	:	923
Village energized	:	798
Facility Created	:	170022
Consumer connected	:	164144
Revenue collection for FY 15-16	:	96.57%
System loss for FY 15-16	:	14.78%
Month out standing	:	1.35



Kishoreganj Palli Bidyut Samity

Mukshedpur, Kishoreganj.

Upazila Included: Astagram, Hossainpur, Ina, Karimgonj
Katiadi, Kishoregonj, Mitamaine Nandail
Nikli, Pakundia & Tarail.

Date established	:	25-02-1989
Date energized	:	30-03-1990
Area in sq. km.	:	2555
No of Substation	:	07
Km. Line Constructed	:	4953
Number of Villages	:	1653
Village energized	:	851
Facility Created	:	206511
Consumer connected	:	195974
Revenue collection for FY 15-16	:	96.81%
System Loss FY 15-16	:	21.70%
Month out standing	:	2.08

Palli Bidyut Samities at a Glance



Kushtia Palli Bidyut Samity

Barokhada, Jugia, Kushtia.

Upazila Included: Bheramara, Daulatpur, Khoksa
Kumarkhali, Kushtia & Mirpur.

Date established	:	17-03-1983
Date energized	:	16-10-1985
Area in sq. km.	:	1677
No of Substation	:	10
Km. Line Constructed	:	4953
Number of Villages	:	907
Village energized	:	843
Facility Created	:	282526
Consumer connected	:	279945
Revenue collection for FY 15-16	:	98.21%
System loss for FY 15-16	:	11.23%
Month out standing	:	1.26



Khulna Palli Bidyut Samity

Thikrabond, Khulna.

Upazila Included: Batiaghata, DaKope, Dighalia,
Dumuria Rupsa (Part), Koyra, Paikgachha & Terkhada.

Date established	:	15-04-2001
Date energized	:	30-04-2000
Area in sq. km.	:	1965
No of Substation	:	06
Km. Line Constructed	:	3591
Number of Villages	:	866
Village energized	:	536
Facility Created	:	188834
Consumer connected	:	154556
Revenue collection for FY 15-16	:	98.25%
System loss for FY 15-16	:	12.05%
Month out standing	:	1.03



Kurigram-Lalmonirhat Palli Bidyut Samity

Muktaram, Trimohoni, Kurigram.

Upazila Included: Aditmari, Bhurungamari, Chilmari,
Fulbari, Kurigram, Lalmonirhat,
Nageshwari, Rajarhat, Kaliganj,
Sundorganj (Part) & Ulipur.

Date established	:	21-01-1996
Date energized	:	02-04-1996
Area in sq. km.	:	2376
No of Substation	:	08
Km. Line Constructed	:	4939
Number of Villages	:	1979
Village energized	:	1380
Facility Created	:	171203
Consumer connected	:	188194
Revenue collection for FY 15-16	:	94.99%
System loss for FY 15-16	:	13.48%
Month out standing	:	1.86



Laxmipur Palli Bidyut Samity

Majupur, Laxmipur.

Upazila Included: Laksmipur, Raipur,
Ramgonj, Kamalnagar & Ramgoti.

Date established	:	10-05-1990
Date energized	:	16-08-1990
Area in sq. km.	:	1643
No of Substation	:	06
Km. Line Constructed	:	4175
Number of Villages	:	513
Village energized	:	475
Facility Created	:	220898
Consumer connected	:	208336
Revenue collection for FY 15-16	:	98.01%
System loss for FY 15-16	:	19.72%
Month out standing	:	1.32



Magura Palli Bidyut Samity

Parnanduali, Magura.

Upazila Included: Magura, Mohammadpur,
Shalikhha & Sreepur.

Date established	:	21-10-1995
Date energized	:	27-04-1996
Area in sq. km.	:	1026
No of Substation	:	04
Km. Line Constructed	:	3189
Number of Villages	:	740
Village energized	:
Facility Created	:	136852
Consumer connected	:	135468
Revenue collection for FY 15-16	:	98.66%
System loss for FY 15-16	:	10.98%
Month out standing	:	1.13



Mymensingh Palli Bidyut Samity-1

Mukttagacha, Mymensingh.

Upazila Included: Bhuapur, Fulbaria, Ghatail, Gopalpur,
Madhupur, Mukttagacha, Dhonbari &

Mymensingh (Part).	:	
Date established	:	27-08-1982
Date energized	:	15-03-1984
Area in sq. km.	:	2263
No of Substation	:	09
Km. Line Constructed	:	5931
Number of Villages	:	1621
Village energized	:	1110
Facility Created	:	250571
Consumer connected	:	238119
Revenue collection for FY 15-16	:	99.31%
System loss for FY 15-16	:	18.56%
Month out standing	:	1.32

Palli Bidyut Samities at a Glance



Mymensingh Palli Bidyut Samity-2

Kathali, Bhaluka, Mymensingh.

Upa-zilla Included: Bhaluka, Gafargaon, Sreepur & Trishal.

Date established	:	27-06-1995
Date energized	:	01-09-1996
Area in sq. km.	:	1560
No of Substation	:	13
Km. Line Constructed	:	4155
Number of Villages	:	792
Village energized	:	649
Facility Created	:	201953
Consumer connected	:	190628
Revenue collection for FY 15-16	:	99.33%
System loss for FY 15-16	:	11.89%
Month out standing	:	1.19



Mymensingh Palli Bidyut Samity-3

Shombhugonj, Mymensingh.

Upa-zilla Included: Fulpur, Haluaghat, Gouripur, Ishuarganj, Mymensingh Sadar(Part), Dhobaura & Tarakanda.

Date established	:	09-11-2000
Date energized	:	30-04-2000
Area in sq. km.	:	1898
No of Substation	:	05
Km. Line Constructed	:	2838
Number of Villages	:	1515
Village energized	:	410
Facility Created	:	111388
Consumer connected	:	110216
Revenue collection for FY 15-16	:	100.207%
System loss for FY 15-16	:	15.28%
Month out standing	:	1.45



Meherpur Palli Bidyut Samity

Police Line, Meherpur.

Upa-zilla Included: Alamdanga, Chuadanga, Damurhuda, Gangni, Jibannagar, Meherpur, Mirpur (Part) & Mujibnagar.

Date established	:	29-12-1985
Date energized	:	16-02-1987
Area in sq. km.	:	1819
No of Substation	:	10
Km. Line Constructed	:	4616
Number of Villages	:	787
Village energized	:	776
Facility Created	:	290691
Consumer connected	:	275533
Revenue collection for FY 15-16	:	97.86%
System loss for FY 15-16	:	15.55%
Month out standing	:	1.73



Madaripur Palli Bidyut Samity

Mostafapur, Madaripur.

Upa-zilla Included: Kalkini, Madaripur, Muladi (Part), Rajoir, & Shibchar.

Date established	:	15-01-1985
Date energized	:	12-12-1985
Area in sq. km.	:	1632
No of Substation	:	08
Km. Line Constructed	:	3711
Number of Villages	:	500
Village energized	:	404
Facility Created	:	194621
Consumer connected	:	189755
Revenue collection for FY 15-16	:	98.67%
System loss for FY 15-16	:	14.05%
Month out standing	:	1.14



Manikganj Palli Bidyut Samity

Mulzan, Manikganj.

Upazila Included: Chouhali (part), Daulatpur, Dhamrai Ghior, Harirampur, Manikgonj, Nagarpur Nawabgonj, Satoria, Shibhalaya & Singair.

Date established	:	07-01-1993
Date energized	:	03-08-1993
Area in sq. km.	:	1445
No of Substation	:	09
Km. Line Constructed	:	4474
Number of Villages	:	1324
Village energized	:	853
Facility Created	:	276071
Consumer connected	:	265460
Revenue collection for FY 15-16	:	99.31%
System loss for FY 15-16	:	8.42
Month out standing	:	0.85



Moulavibazar Palli Bidyut Samity

Srimongal, Moulavibazar.

Upazila Included: Barlekha, Kamalgonj, Kulaura, Moulavibazar, Rajnagar, Jhuri & Srimongal.

Date established	:	14-09-1979
Date energized	:	25-06-1981
Area in sq. km.	:	2799
No of Substation	:	06
Km. Line Constructed	:	5051
Number of Villages	:	1988
Village energized	:	979
Facility Created	:	217625
Consumer connected	:	221496
Revenue collection for FY 15-16	:	101.12%
System loss for FY 15-16	:	14.33%
Month out standing	:	1.50

Palli Bidyut Samities at a Glance



Munshiganj Palli Bidyut Samity

Idrakpur, Munshiganj.

Upazila Included: Louhajong, Munshigonj, Fatullah (Part), Narayangonj (Part), Sonargaon (Part), Shirajdikhan, Srinagar & Tangibari.

Date established	: 29-09-1998
Date energized	: 30-09-1999
Area in sq. km.	: 891
No of Substation	: 10
Km. Line Constructed	: 3750
Number of Villages	: 818
Village energized	: 818
Facility Created	: 296961
Consumer connected	: 291915
Revenue collection for FY 15-16	: 99.36%
System loss for FY 15-16	: 9.97%
Month out standing	: 0.96



Narsinghdi Palli Bidyut Samity-1

Madhobdi, Narsinghdi.

Upazila Included: Narsinghdi (Part) & Palash.

Date established	: 15-03-1986
Date energized	: 29-10-1986
Area in sq. km.	: 235
No of Substation	: 09
Km. Line Constructed	: 1702
Number of Villages	: 341
Village energized	: 341
Facility Created	: 124535
Consumer connected	: 124009
Revenue collection for FY 15-16	: 97.40%
System loss for FY 15-16	: 5.18%
Month out standing	: 1.09



Narsinghdi Palli Bidyut Samity-2

Chauala, Narsinghdi.

Upazila Included: 33 KV Source Line Bajitpur, Belabo, Bhairab, Kuliarchar, Manohardi, Narsinghdi, Raipura & Shibpur.

Date established	: 14-04-1990
Date energized	: 14-04-1990
Area in sq. km.	: 1347
No of Substation	: 11
Km. Line Constructed	: 4832
Number of Villages	: 1110
Village energized	: 980
Facility Created	: 309814
Consumer connected	: 302490
Revenue collection for FY 15-16	: 98.92%
System loss for FY 15-16	: 10.98%
Month out standing	: 1.18



Noakhali Palli Bidyut Samity

Begumganj, Noakhali.

Upazila Included: Begamganj, Chatkhil, Companigonj Langolkot (Part), Sonaimuri, Sudharam, Subornochor, Kabirhat, Hatia, & Senbag Shudharam.

Date established	: 04-04-1985
Date energized	: 08-12-1986
Area in sq. km.	: 2488
No of Substation	: 11
Km. Line Constructed	: 6882
Number of Villages	: 955
Village energized	: 930
Facility Created	: 319557
Consumer connected	: 306668
Revenue collection for FY 15-16	: 98.59%
System loss for FY 15-16	: 15.20%
Month out standing	: 1.18



Netrokona Palli Bidyut Samity

Rajendrapur, Challisha, Netrokona.

Upazila Included: Atpara, Barhatta, Durgapur, Kaliajuri, Kalmakanda, Kendua, Madan, Mohangonj, Dharmapasha, Netrokona & Purbadhala.

Date established	: 06-03-1994
Date energized	: 14-02-1995
Area in sq. km.	: 2634
No of Substation	: 08
Km. Line Constructed	: 5282
Number of Villages	: 2457
Village energized	: 1353
Facility Created	: 203495
Consumer connected	: 186523
Revenue collection for FY 15-16	: 98.92%
System loss for FY 15-16	: 12.97%
Month out standing	: 1.71



Natore Palli Bidyut Samity-1

Fulbagan, Natore.

Upazila Included: Bagatipara, Bagmara, Natore, Puthia, Noldanga & Singra.

Date established	: 06-04-1979
Date energized	: 15-02-1981
Area in sq. km.	: 1632
No of Substation	: 08
Km. Line Constructed	: 4552
Number of Villages	: 1320
Village energized	: 1040
Facility Created	: 251480
Consumer connected	: 225624
Revenue collection for FY 15-16	: 97.16%
System loss for FY 15-16	: 13.30%
Month out standing	: 1.42

Palli Bidyut Samities at a Glance



Natore Palli Bidyut Samity-2

Harowa, Banpara, Natore.

Upazila Included: Bagatipara (Part), Bagha, Baraigram, Charghat, Gurudashpur, Doulatpur (Part) & Lalpur.

Date established	:	11-01-1980
Date energized	:	12-12-1981
Area in sq. km.	:	1207
No of Substation	:	07
Km. Line Constructed	:	3423
Number of Villages	:	889
Village energized	:	889
Facility Created	:	223781
Consumer connected	:	208503
Revenue collection for FY 15-16	:	97.54%
System loss for FY 15-16	:	12.84%
Month out standing	:	1.24



Naogaon Palli Bidyut Samity-1

Chalkbiram, Naogaon.

Upazila Included: Adamdighi (part), Atrai, Badalgachhi, Mahadchpur(Part), Manda, Naogaon, Niamatpur & Raninagar S/S source 33 Kv.

Date established	:	06-07-2015
Date energized	:	19-04-1990
Area in sq. km.	:	1936
No of Substation	:	09
Km. Line Constructed	:	5793
Number of Villages	:	1524
Village energized	:	1108
Facility Created	:	220596
Consumer connected	:	215221
Revenue collection for FY 15-16	:	95.21%
System loss for FY 15-16	:	9.52%
Month out standing	:	1.27



Naogaon Palli Bidyut Samity-2

Patnitola, Naogaon.

Upazila Included: Mohadevpur, Porsha, Patnitola, Sapahar & Damurhat.

Date established	:	06-07-2015
Date energized	:	19-04-1990
Area in sq. km.	:	1513
No of Substation	:	09
Km. Line Constructed	:	3817
Number of Villages	:	1265
Village energized	:	748
Facility Created	:	126009
Consumer connected	:	120850
Revenue collection for FY 15-16	:	96.92%
System loss for FY 15-16	:	14.52%
Month out standing	:	1.41



Narayangonj Palli Bidyut Samity-1

Nanakhi, Sonargaon, Narayangonj.

Upazila Included: Bandar, Sonargaon, Rugganj (Part).

Date established	:	27-05-2015
Date energized	:	01-07-2005
Area in sq. km.	:	258
No of Substation	:	16
Km. Line Constructed	:	1878
Number of Villages	:	690
Village energized	:	690
Facility Created	:	192221
Consumer connected	:	190073
Revenue collection for FY 15-16	:	99.89%
System loss for FY 15-16	:	7.41%
Month out standing	:	1.08



Narayangonj Palli Bidyut Samity-2

Saoghat, Ruggonj, Narayangonj.

Upazila : Arahazar & Ruggonj (Part).

Date established	:	27-05-2015
Date energized	:	01-07-2015
Area in sq. km.	:	361
No of Substation	:	09
Km. Line Constructed	:	1995
Number of Villages	:	585
Village energized	:	584
Facility Created	:	159570
Consumer connected	:	153528
Revenue collection for FY 15-16	:	99.30%
System loss for FY 15-16	:	09.71%
Month out standing	:	1.41



Nilphamari Palli Bidyut Samity

Sutipara, Nilphamari.

Upazila Included: Dimla, Domar, Jaldhaka, Kishoregonj & Nilphamari.

Date established	:	13-05-1998
Date energized	:	01-08-1997
Area in sq. km.	:	1440
No of Substation	:	06
Km. Line Constructed	:	3574
Number of Villages	:	332
Village energized	:	302
Facility Created	:	134874
Consumer connected	:	128910
Revenue collection for FY 15-16	:	96.01%
System loss for FY 15-16	:	11.54%
Month out standing	:	1.65